

# PRECEDENTS FOR PATHWAY IMPROVEMENT



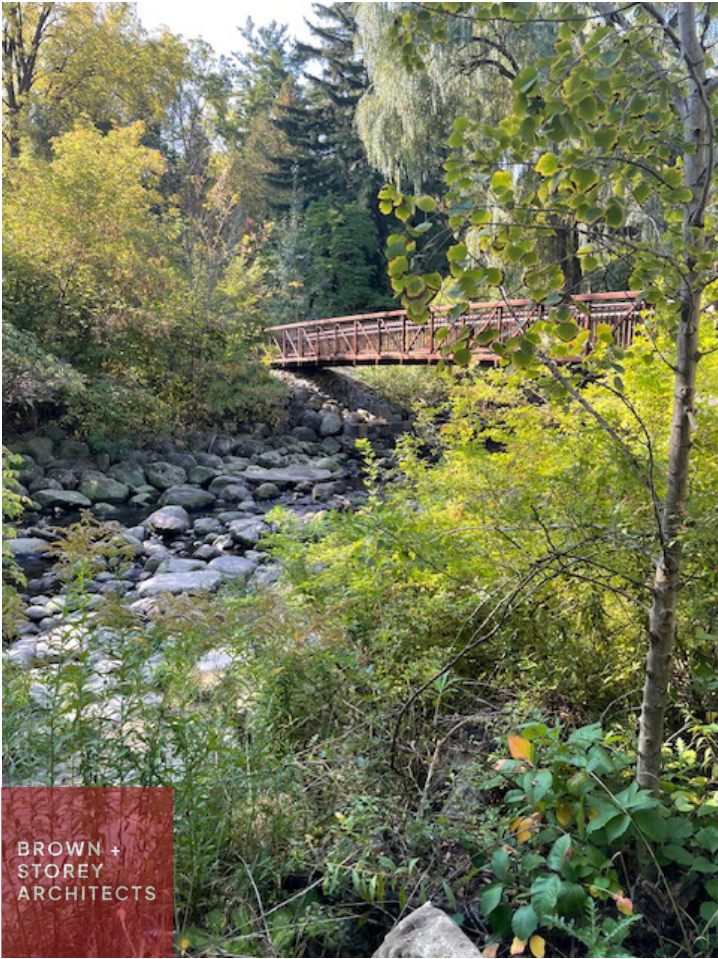
// Mud Lake Trail - Ottawa, ON.



*Precedents - Wilket Creek Park*

Project Details

- Location: Toronto, ON.





## *Precedents - Pacific Spirit Park*

### Project Details

- **Location:** Vancouver, BC.
- **Common Trail Route:** 3-Hour Trip through the forest

The forests, creeks, beaches, cliffs and bog of this regional park provide habitat to a wide variety of plants and animals in the heart of Canada's third largest urban area. The park's trails are also a great place for Metro Vancouver residents to get out and connect with that amazing nature.





*Precedents -* **OOOPS (Ossington Old Orchard Public School)**

**Project Details**

- **Location:** Toronto, ON.





Precedents - *Forest Tower*

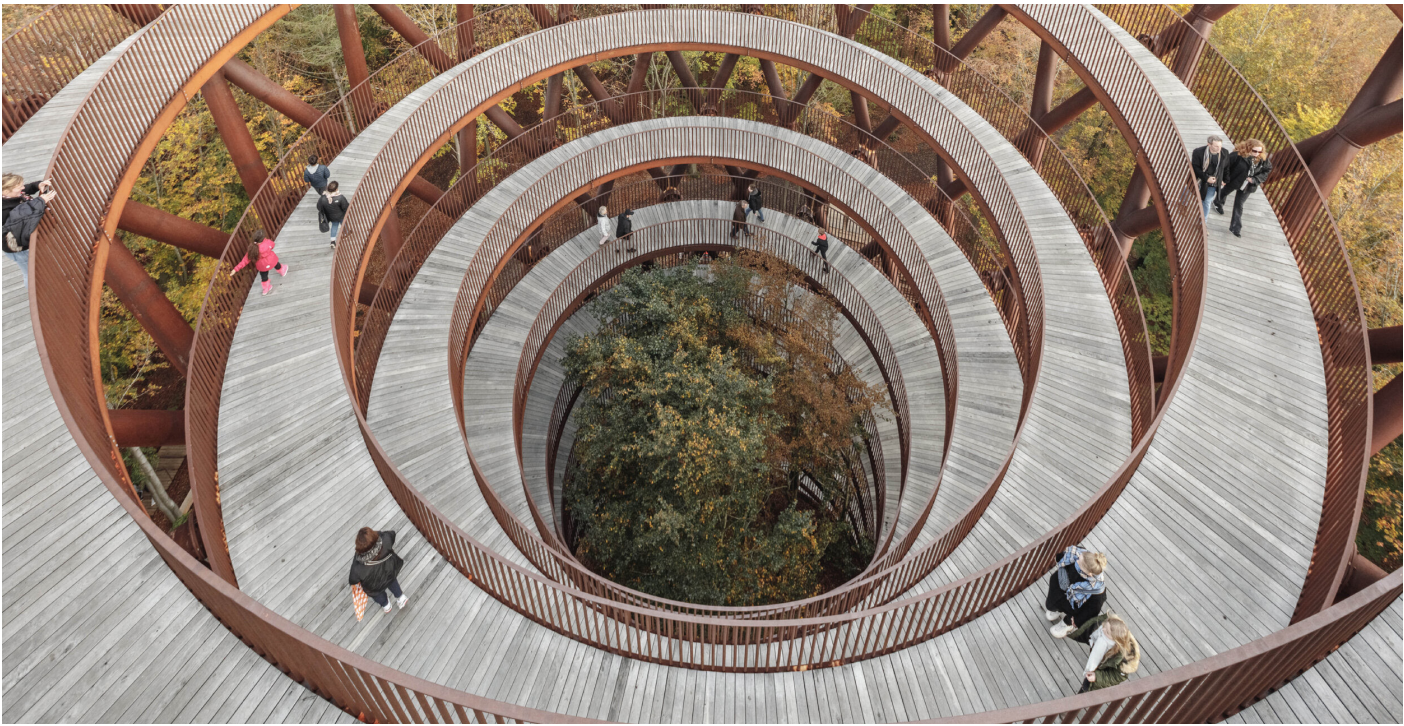
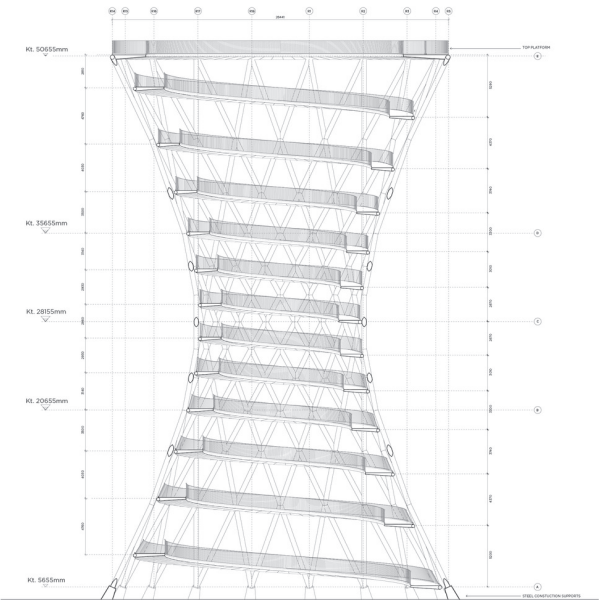
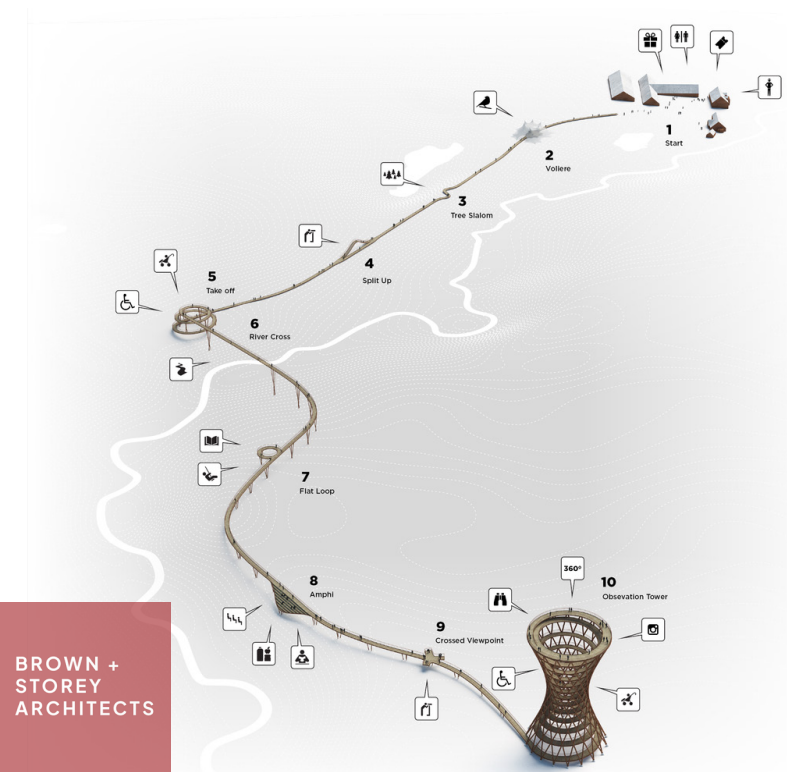
Project Details

- **Size:** 900m boardwalk, 50m tower
- **Location:** Haslev, Denmark
- **Year:** 2017, Completed

The Forest Tower in Camp Adventure Park is a new and unique experience destination. A 900 meter boardwalk connected to a 45 meter tall observation tower creates a unique opportunity to take a walk among the trees and experience the stunning nature of the preserved forest from another perspective. The tower and the boardwalk are seamlessly connected by a continuous ramp that makes the forest accessible to all - regardless of their physical condition.

The route through the trees passes gently and sensitively through different varieties of forest, while minimizing the disturbance of the environment. The design of the treetop walk is split into a higher and a lower walkway. The tower and the lower walkway are located in the younger areas whereas the high walkway will pass through the oldest parts of the forest. The high walkway will also feature a series of activities for different user groups to learn and enjoy the forest qualities.

The culminating feature of the walk is the tower and observation deck located 45 meters above the ground. The geometry of the tower is shaped to enhance the visitor experience, shunning the typical cylindrical shape in favor of a curved profile with a slender waist and enlarged base and crown. This does not only increase the stability of the tower but also increase the observation deck area at the top of the tower, while allowing for better contact to the forest canopy.





Precedents - *Hamaren Park*

Project Details

- **Size:** 2.264 m²
- **Location:** Fyresdal, Norway
- **Year:** 2019-2023, Completed

The treetop walk reconnects all user groups with nature through a design that enhances the experience of the visitors – taking them on a slow and poetic walk through the forest canopy, at 60 meters above lake water level.

The one kilometer long and two meters wide plank boardwalk extends on pillars all the way from the forest floor, up between the treetops, and along the mountain ridge – a hill with an elevation of 338 metres. At the end of the trail, a considerable circular viewpoint with a diameter of 50 meters provides a spectacular 360-degree view over the pine forest, clear lakes and rock formation that make up the natural landscape.

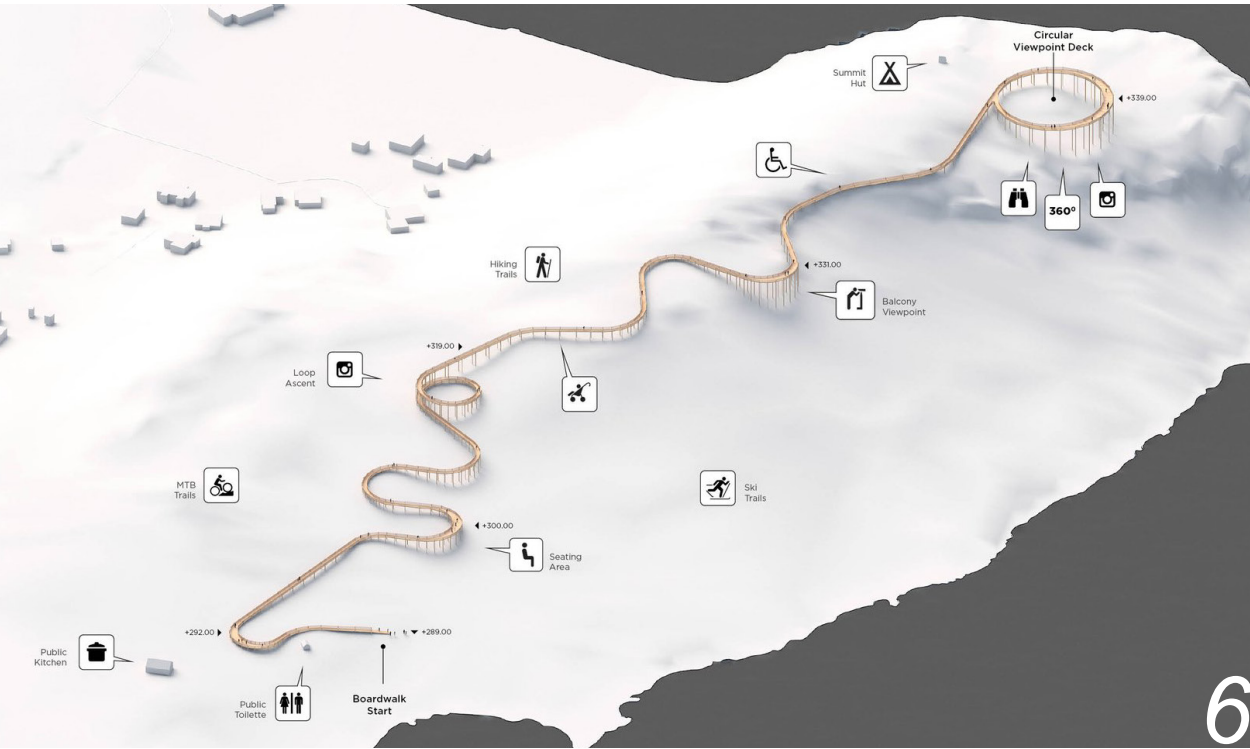
The wooden boardwalk structure is carefully designed as a response to the curvature of the mountain, sometimes following the mountain's ridges and slopes, and sometimes bending out, creating viewpoints and dramatic drops where visitors can feel the wind in the treetops.

The walking trail, which is universally designed with a gentle incline, is suitable for pedestrians, cyclists, pushchairs and wheelchairs. It grew out of a heartfelt desire to give all people, regardless of physical abilities, the sensational feeling of walking amongst the treetops.

The loadbearing structure as well as the boardwalk and railing are made from locally sourced pinewood. This way the structure literally blends in with existing pine trees on the mountain, sometimes giving the visual impression that the boardwalk levitates through the forest.



**Boardwalk Infrastructure**  
A wooden boardwalk structure enables the accessibility

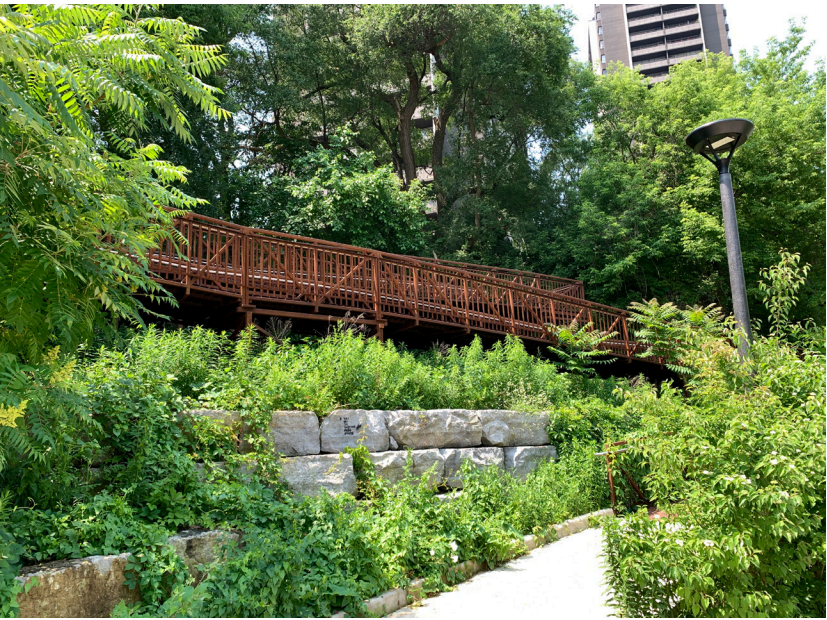
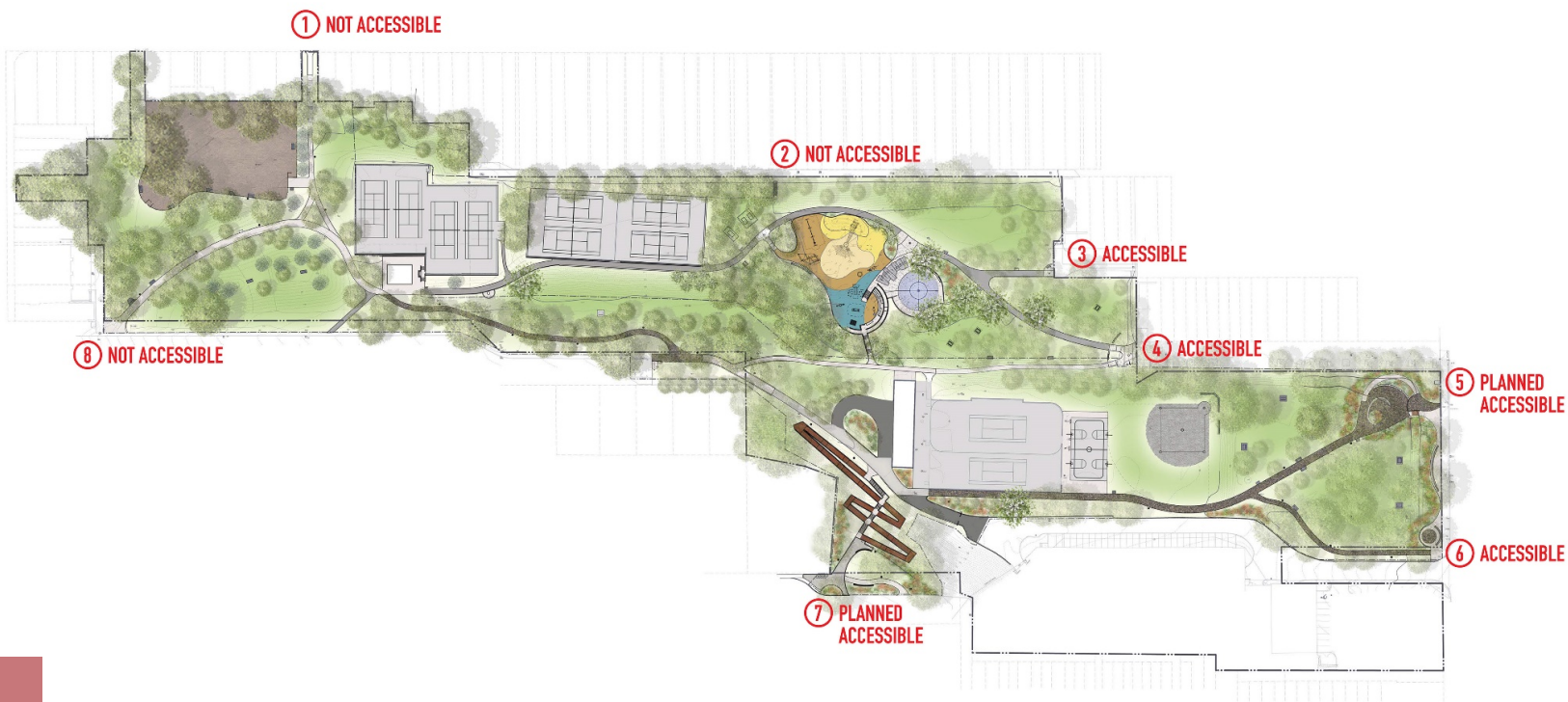
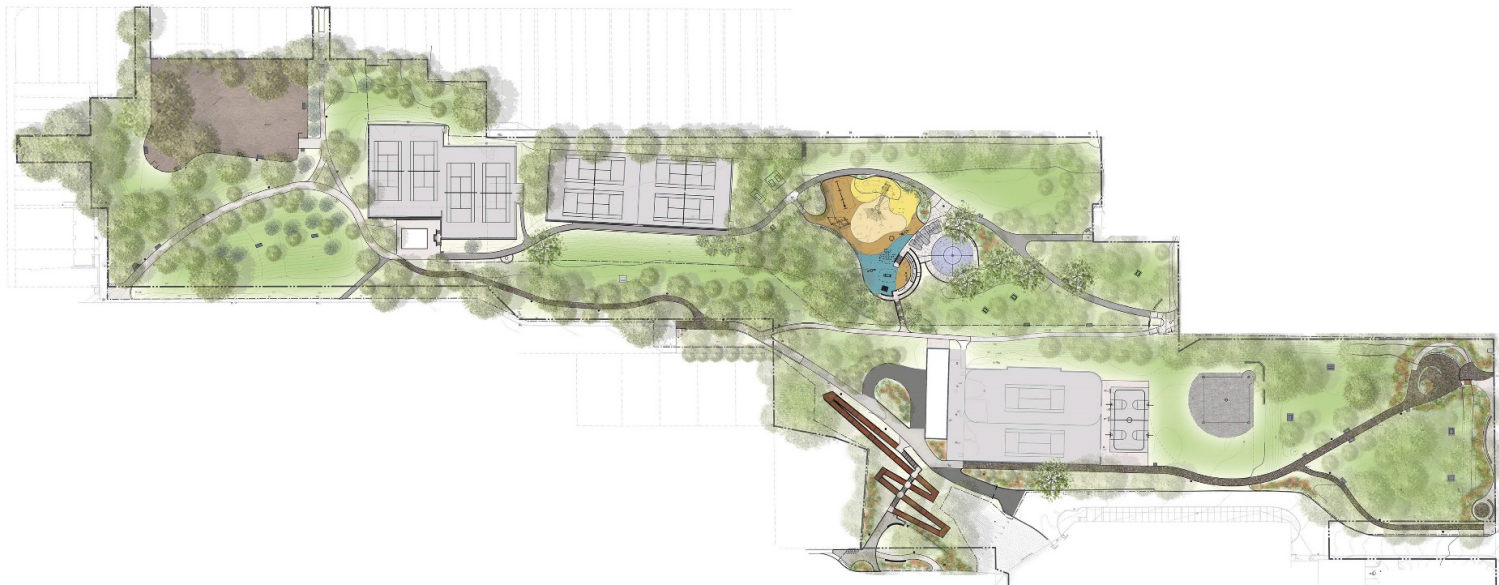




Precedents - *Ramsden Park*

Project + Ramp Construction Details

- **Location:** Toronto, ON.
- **Cost:** \$950,000.00
- **Duration:** Fabrication - 16 weeks, Installation - 3 weeks





# Precedents - Iron Bridge Fabrication

## COMPANY DETAILS:

Iron Bridge Fabrication is a design, engineer, and build company that specializes in metal fabrication and has completed many bridge/ramp projects, including the Ramsden Park Accessible Ramp. The following are several images of their work and process.



// Blue Mountains Slabtown Road Bridge



// Grey Highlands Epping Road Bridge Installation

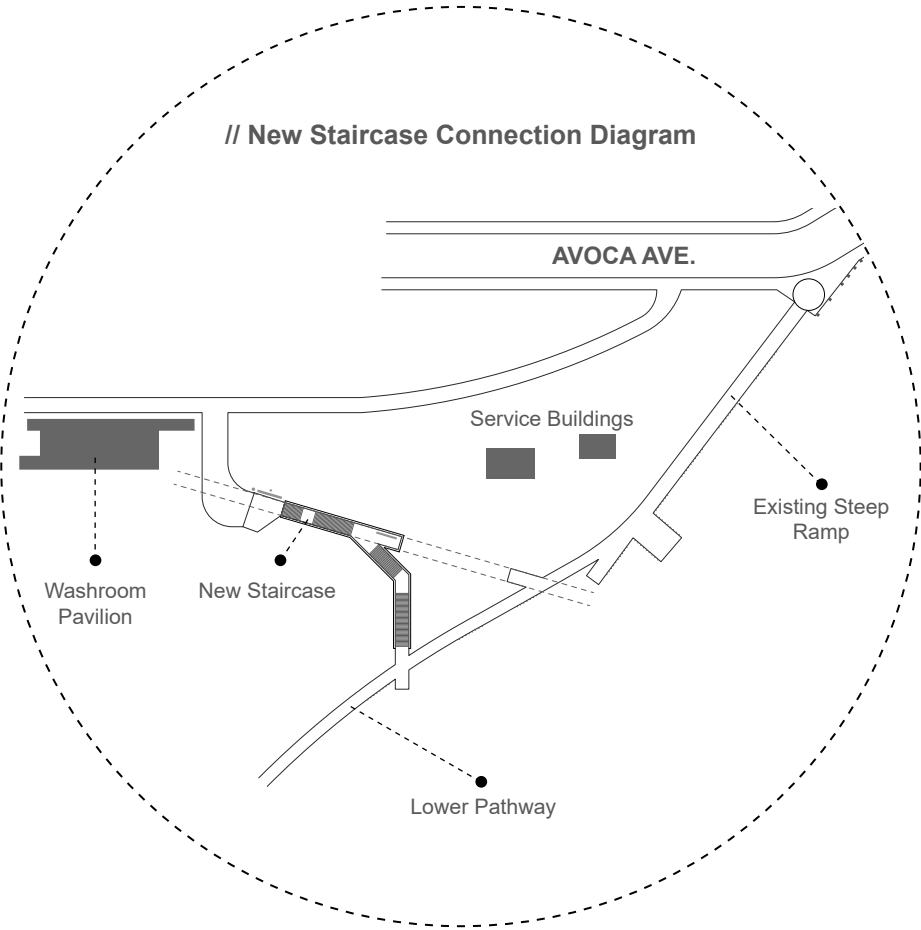


// Easter Humber Trail Bridges and Boardwalks



# Precedents - Rosehill Reservoir Plan

The Rosehill Reservoir is work that we as Brown + Storey Architects have recently completed that is part of the overall system for the Vale of Avoca.



## New Improved Public Staircase Connects the New Washroom Pavilion and The Lower Ravine

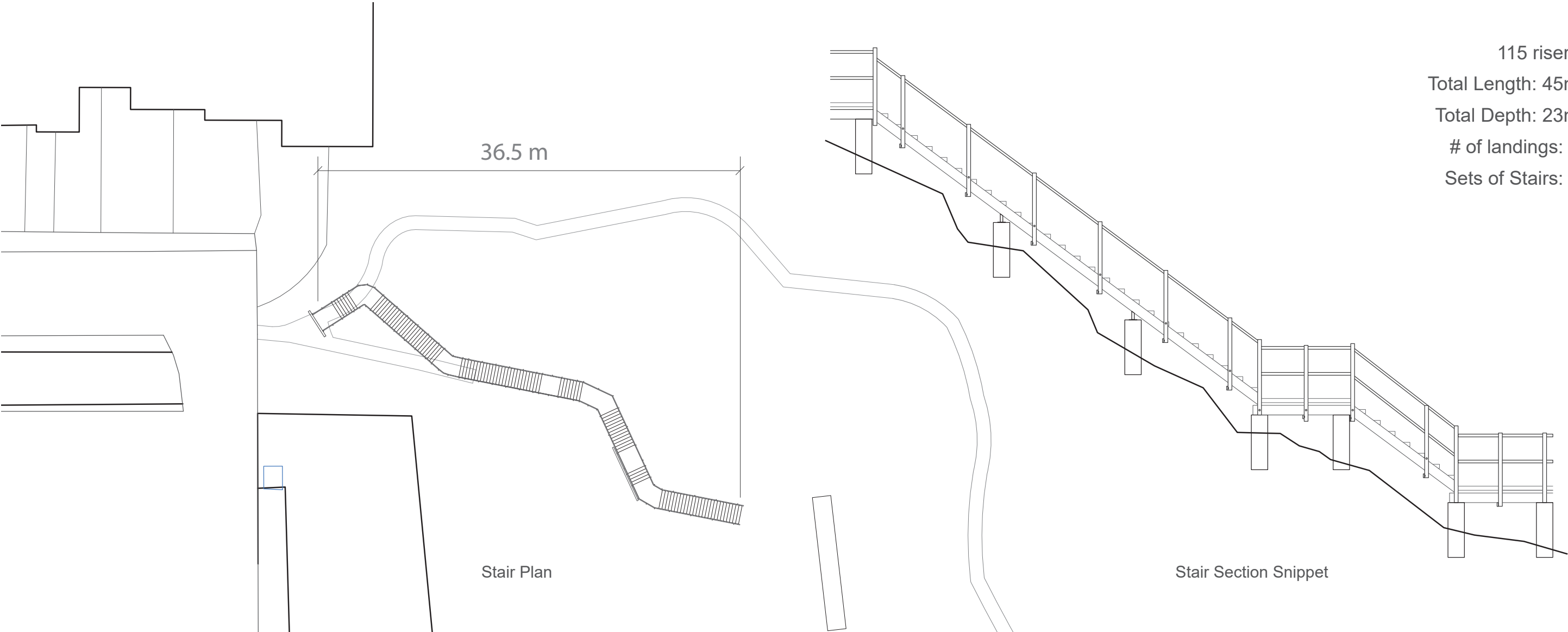
Located adjacent the existing public washroom pavilion is a stair in need of repair and reconnection. The new stair is punctuated at its top with a small public space, with lighting, benches, and waste containers. It then connects in three angled stair stages, with viewing areas between to cross the lower pathway that is linked to the steep sloped ramp coming down from Avoca Avenue. Where pathways and ramps meet these intersections are marked as places to stop, rest, and enjoy the moment.



// Rosehill Reservoir Plan



Precedents - *Heath St. Staircase*



115 risers  
Total Length: 45m  
Total Depth: 23m  
# of landings: 7  
Sets of Stairs: 7

