



VALE OF AVOCA BRIDGE + ELEVATOR TOWER + SHADE CANOPY PRECEDENTS

Brown + Storey Architects Inc.
December 6, 2024

SYMBOLIC ARTIFACT



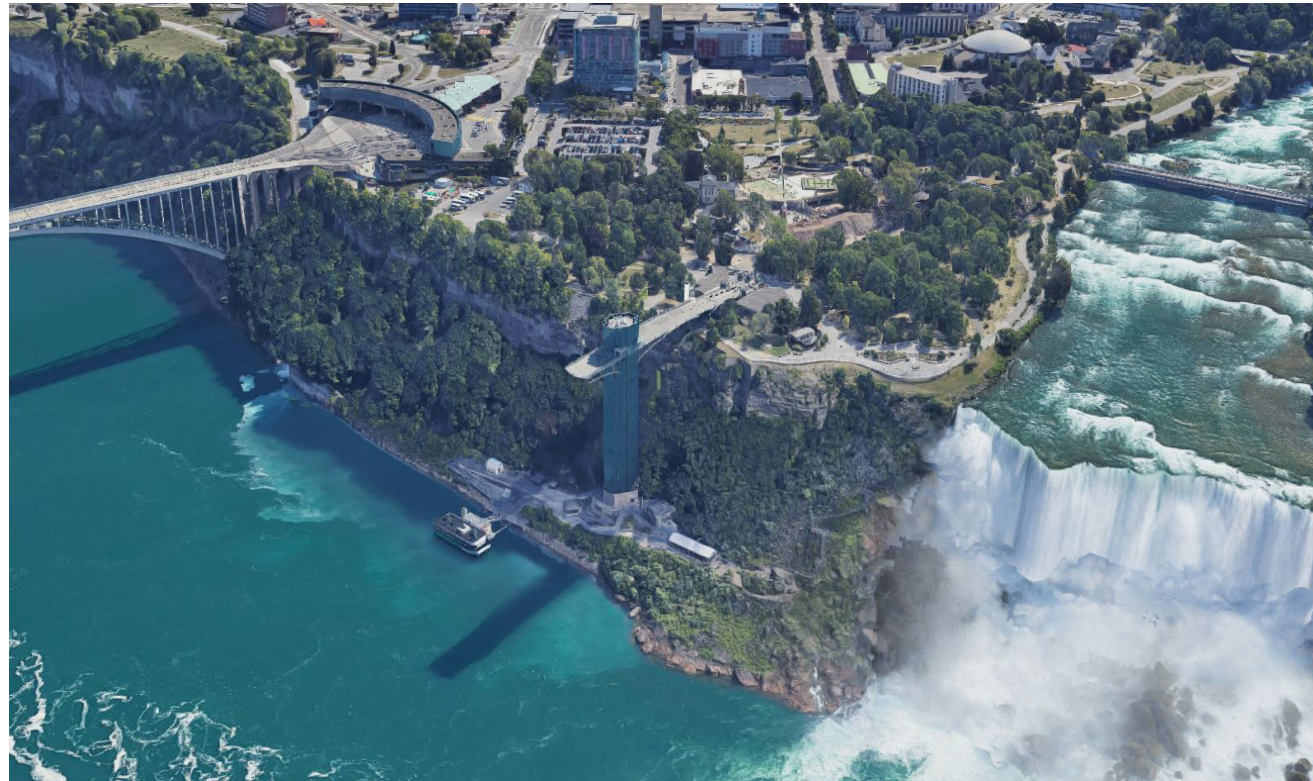
This fragmented section of a tree trunk illustrates the Y-joint typical of all tree/branch configurations. We are proposing an analogous and metaphoric relation to our tower/elevator structure in its natural environment/forest of trees

NIAGARA PROSPECT POINT

- **Location:** Niagara Falls NY, USA
- **Facilities:** Observation Deck, 2 Elevators, Restrooms, Giftshop, Snackbar
- **Materials:** Aluminium, Steel, Glass
- **Height:** ~86m
- **Price at time of construction:** began 1958, \$1,250,000.00. Opened 1961

Site Plan Image





PROMENADE SAMUEL-DE CHAMPLAIN - 2023

- **Location:** Québec, QC

The recently concluded third phase of the Promenade Samuel-de Champlain, completed fifteen years after the inaugural phase, offers a continuation of the design language while evolving to provide distinct and enhanced visitor amenities.

Previously a desolate expanse of highways and rail corridors along the St. Lawrence River, the area was an insurmountable barrier for the inhabitants of the city. The metamorphosis of the highway into an urban boulevard and the relocation of railway tracks unlocked approximately 150,000 square metres of land across 2.5-kilometers creating an ideal canvas for a significant recreational and cultural project championing active mobility along the riverfront.

The primary goal of the project was to return the river to the people of Quebec—a social mission and driving force behind the Quebec government’s legacy project of the capital city. The architectural vision embraced a comprehensive, multidisciplinary approach, encompassing all scales from the master plan to architectural and landscape design, down to urban furniture and signage.

Furthermore, the project served as an opportunity to restore biodiversity to this neglected area by planting 1,055 trees, 28,950 shrubs, and 117,000 native herbaceous plants. Efforts were made to revitalize the Saint-Michel marsh, preserving the ecosystem crucial for the area’s flora and fauna.

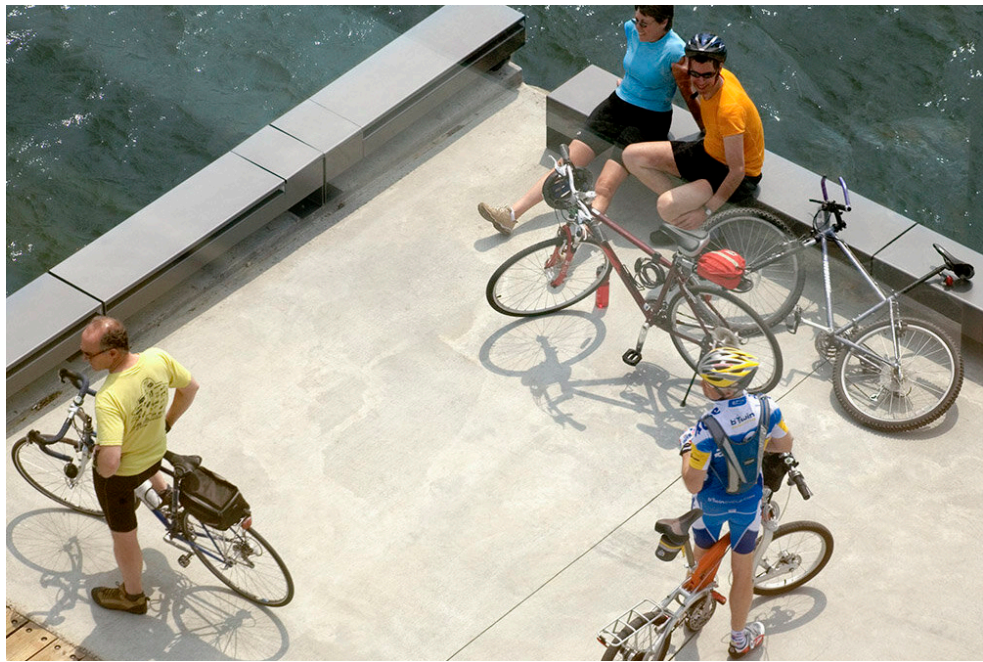
The outcome of this multidisciplinary effort is a project seamlessly woven into its environment, resonating as a resounding success among visitors since its inauguration. It stands as a source of collective pride and identity, aligning perfectly with its objective—to offer users a meaningful, enjoyable experience while championing goals related to public health, ecology, biodiversity, and climate action.

Master Plan

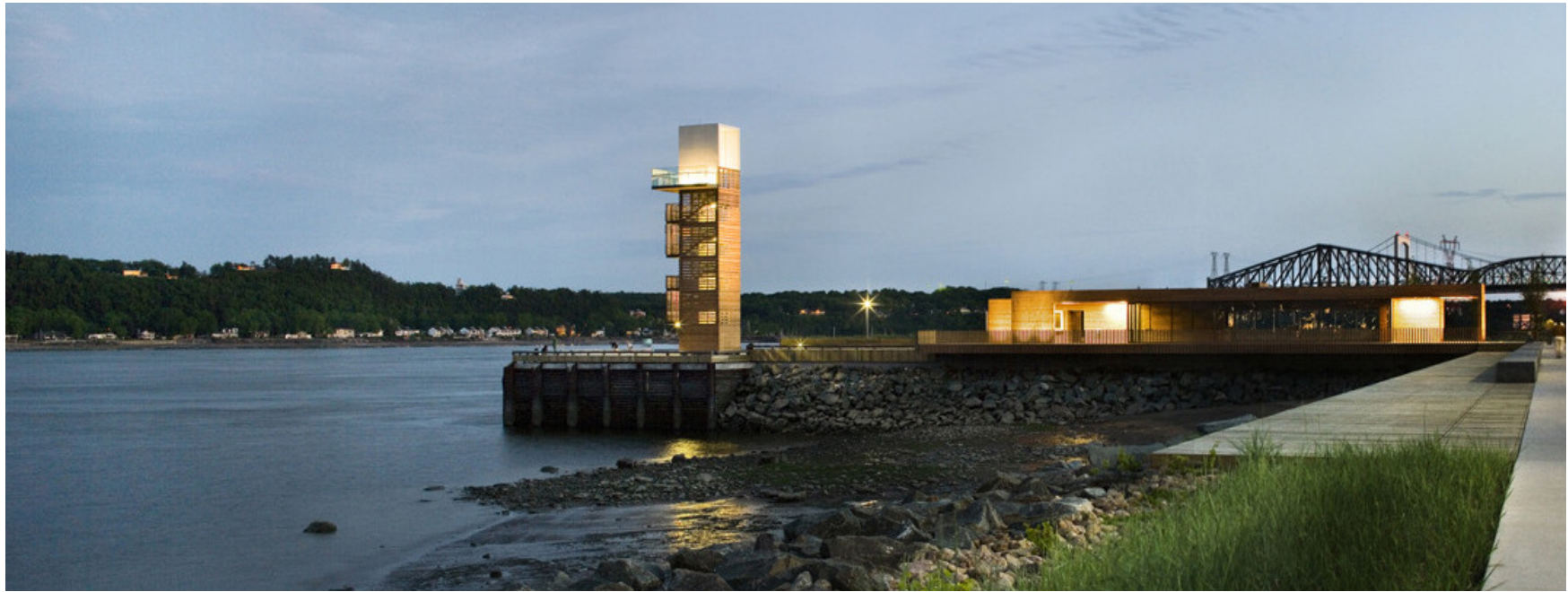
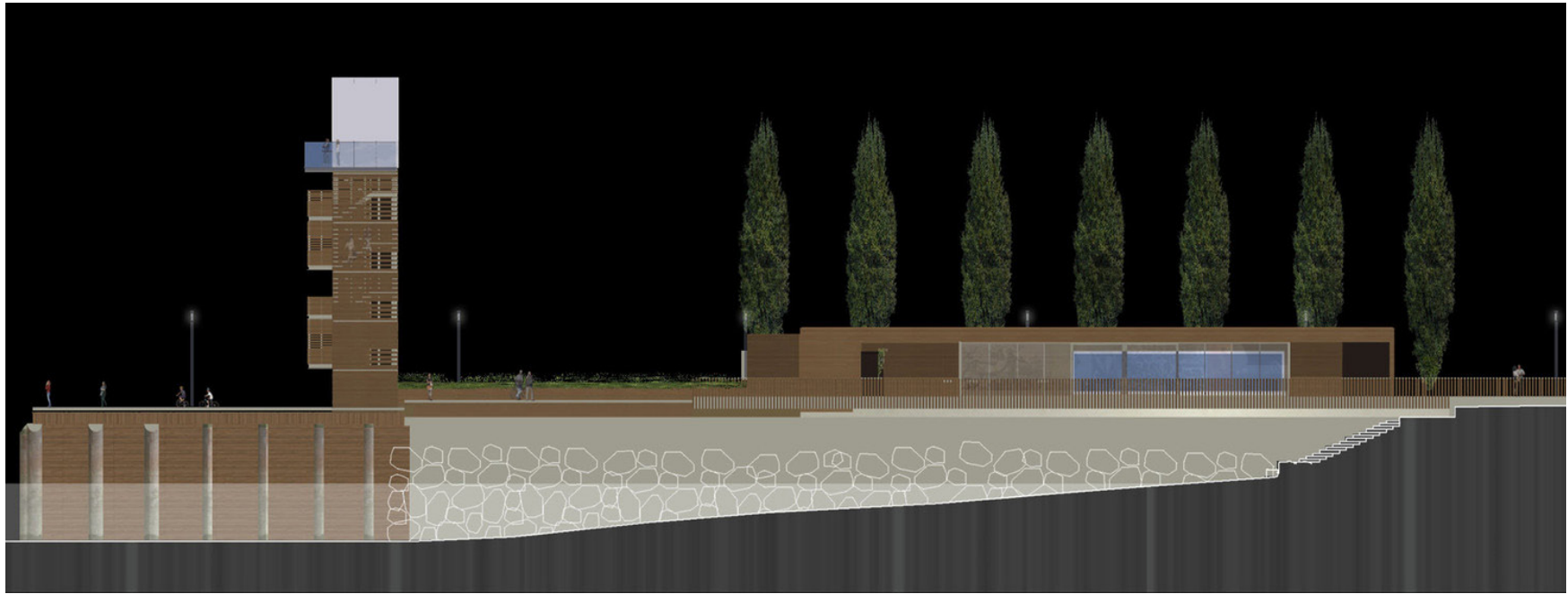


Precedent #2

LANDSCAPES



TOWER + BOARDWALK



SANTA JUSTA LIFT

- **Location:** Lisboa, Portugal
- **Facilities:** Terrace, Small Museum, Two Wooden Cabin Elevators
- **Height:** 45m
- **Dates:** 1902 - Inaugurated, 1907 - Electrified, 2002 - Classified National Monument
- Originally powered by steam

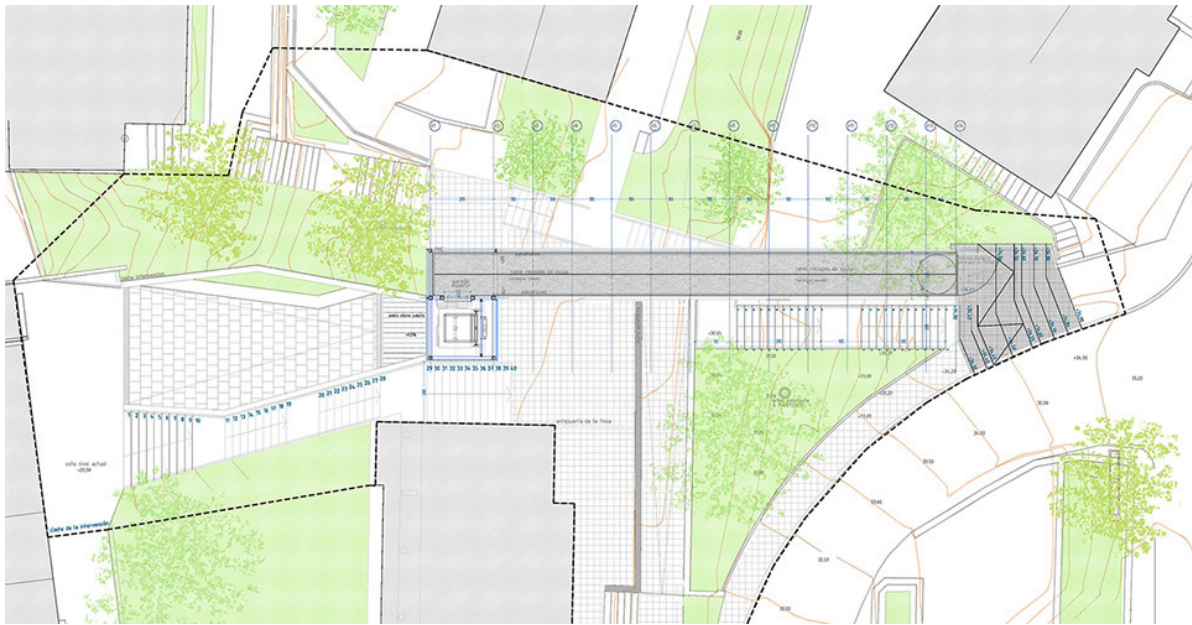
Site Plan Image



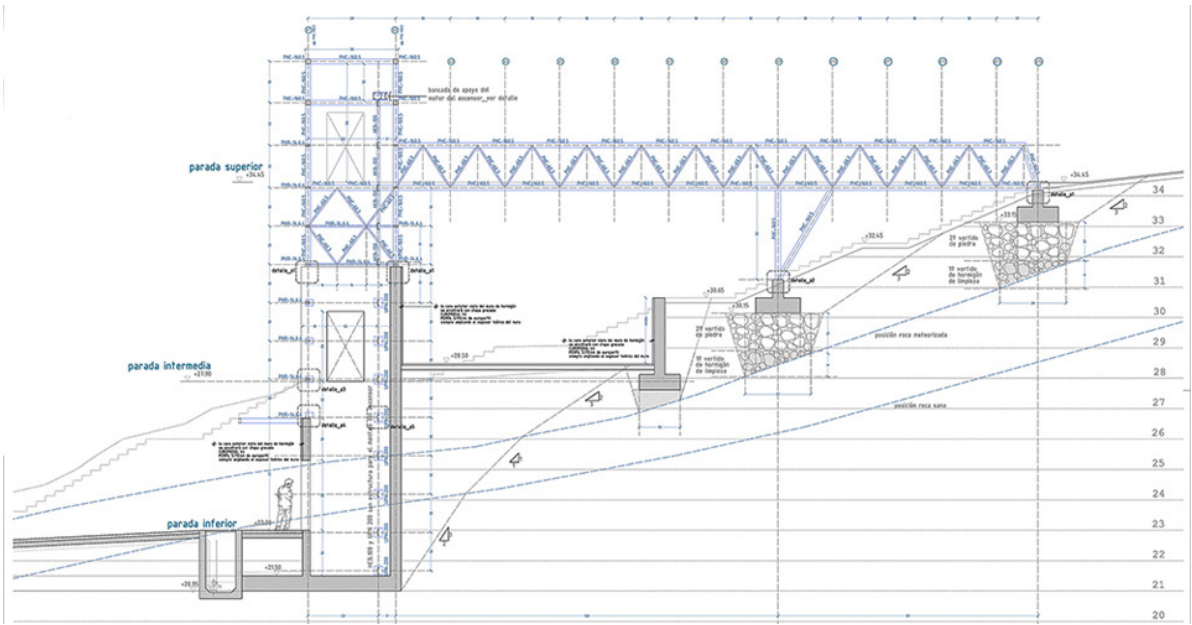


VAUMM - APEADERO

- **Location:** Errenteria, Spain
- **Year:** 2011
- **Cost:** 490.000€



Plan

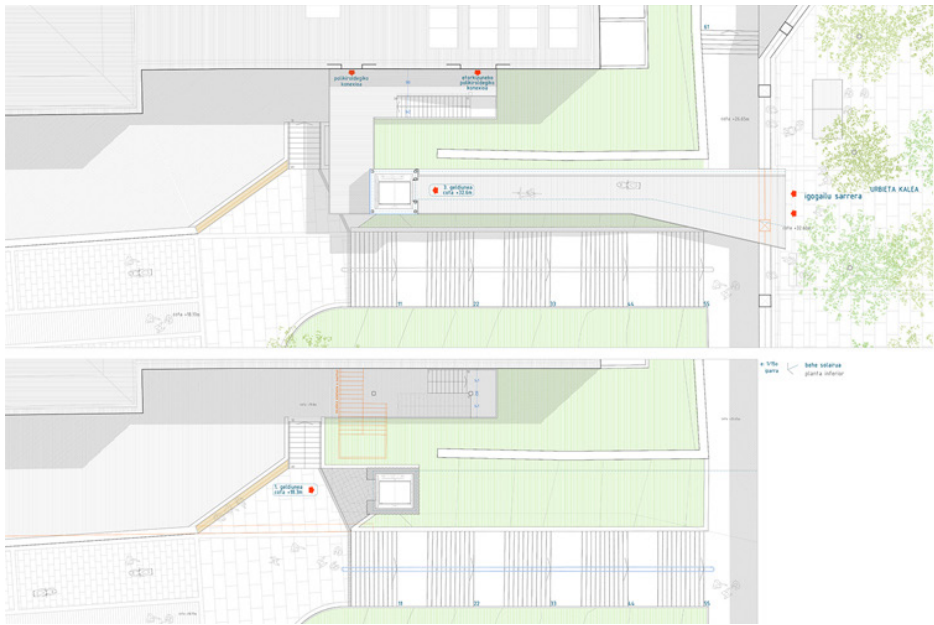


Section Detail



VAUMM - ASCENSEUR LBB_U

- **Location:** Hernani, Spain
- **Year:** 2015
- **Cost:** 375.000€



Plans



VAUMM - KAPUTXINOS

- **Location:** Errenteria, Spain
- **Year:** 2007
- **Cost:** 210.000€



VAUMM - ALABERGA

- **Location:** Errenteria, Spain
- **Year:** 2018
- **Cost:** 1,75 mills €

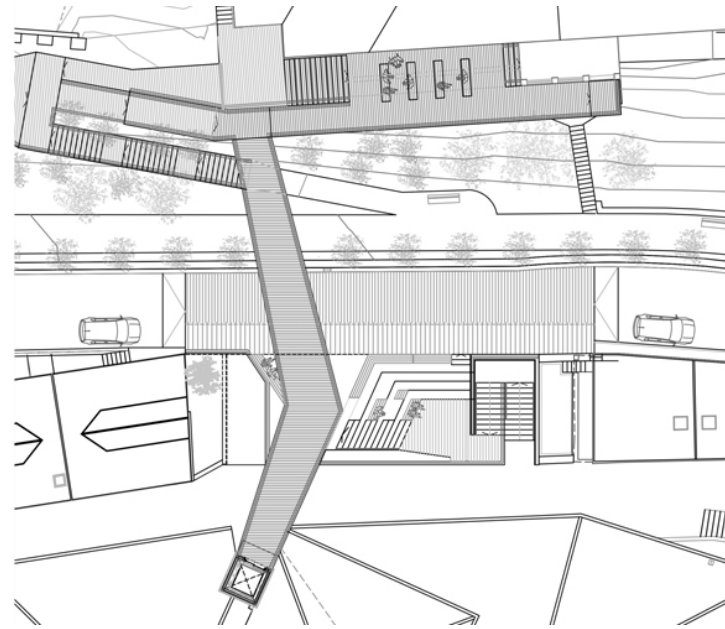
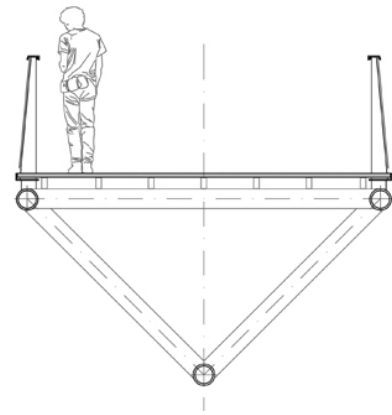


Section



VAUMM - ZUMAIA

- **Location:** Zumaia, Spain
- **Year:** 2020
- **Cost:** 0,9 mill €



Section + Plan



MASSEY HARRIS PARK - SHADE TRELLIS

- **Location:** Toronto, ON.

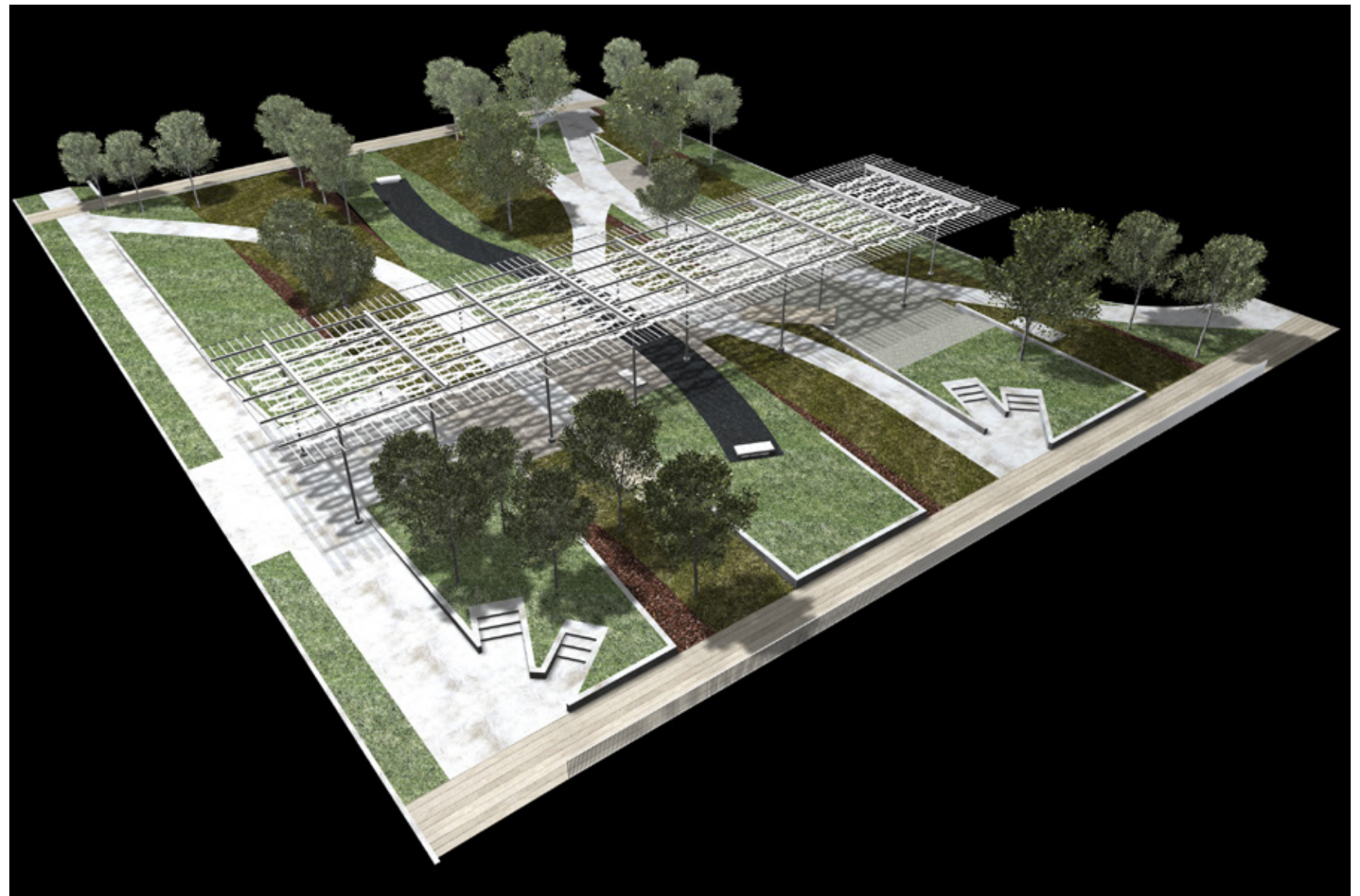
Occupying a small site in a rapidly changing downtown neighbourhood, Massey Harris Park is an urban oasis. The community it serves is sophisticated, diverse and fast-growing, but until the insertion of this park it had been a neighbourhood without a place to call its own. Massey Harris Park became that place, a local gathering spot for young and old as well as a way to get from one point to another.

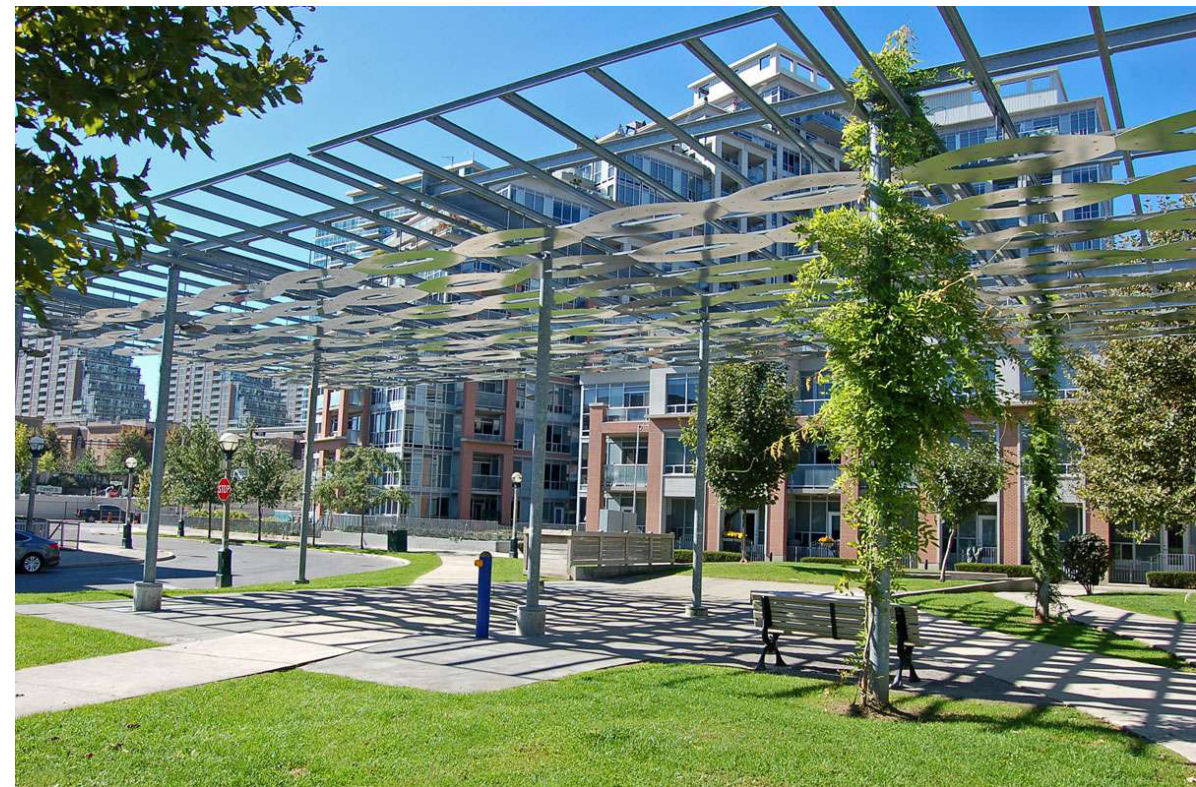
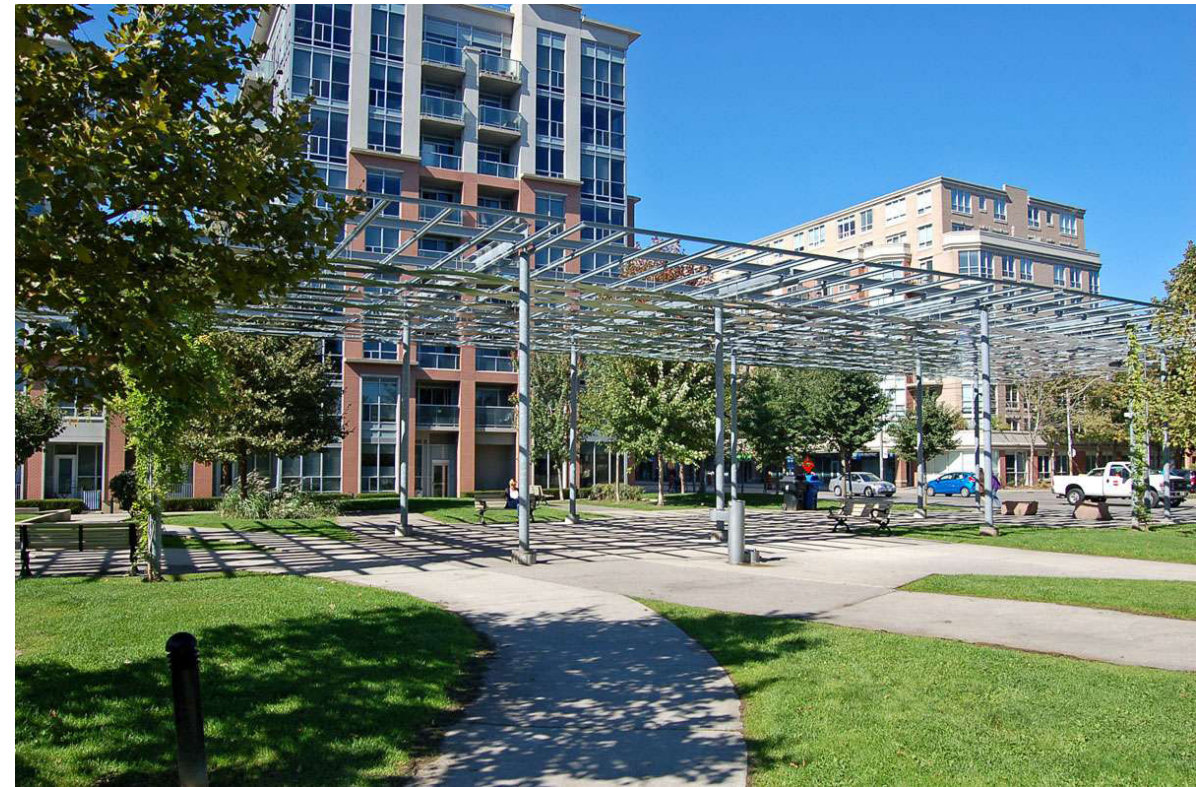
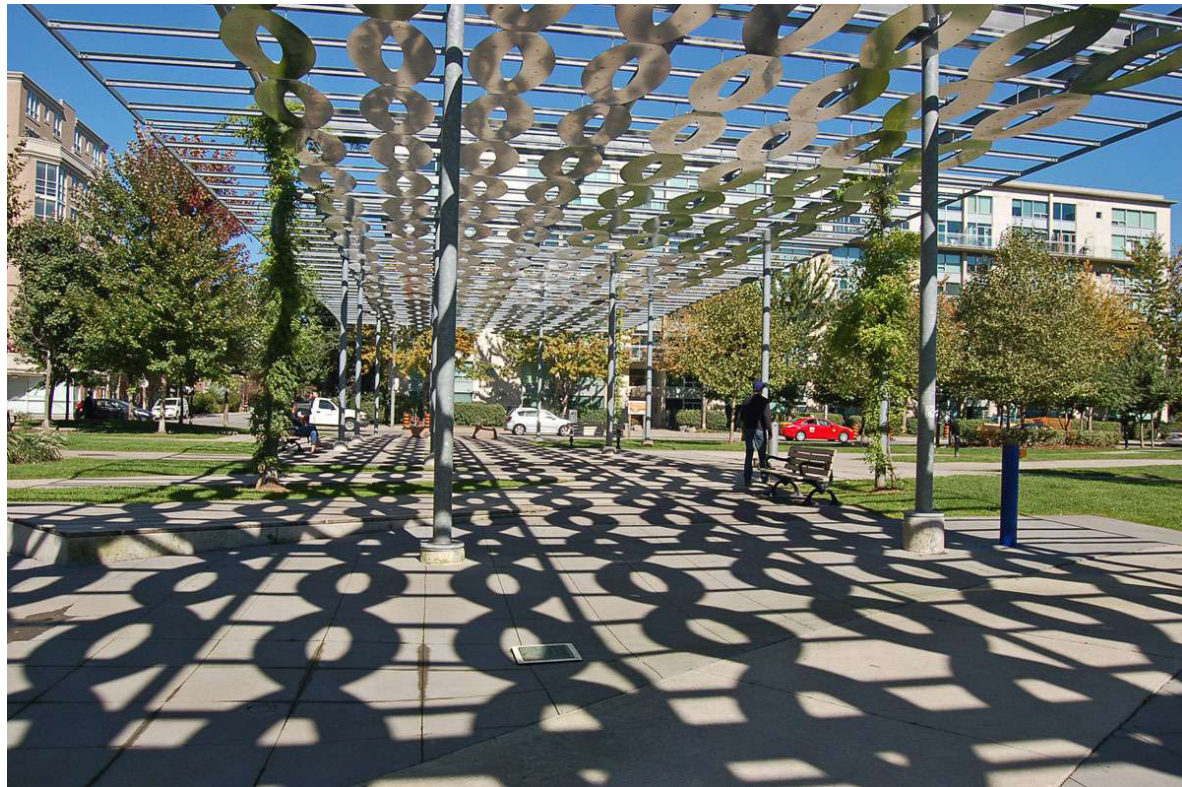
Bordered by condominiums and busy King Street West, the park is conceived as a multi-layered space. It contains many traditional park elements – trees, a trellis, flowers, fountains, grass, paths – but these are reconfigured to meet the needs of 21st century city life: a wide variety of users and expectations ranging from the most casual to formal community events. A large trellis bisects the park on a north-south axis, providing shelter and a focal point for impromptu and organized activities. As a structure, the trellis supports various lighting devices as well as vines and other climbing plants. It is also an artwork installed in collaboration with artist James McLeod, highlighted with a reflective roof whose colour and character changes with the time of day and season.

Overlaying the site there is a pattern of pathways, some paved, some grassy, some direct, some indirect, that together create a sense of space and dimension. There are relationships created in the interaction and the proximity of the pathways that extend beyond the linking of point A with point B. These paths also define a series of small self-contained areas where residents can sit and chat, read a newspaper or simply watch the world go by. To take maximum advantage of the relatively restricted location, these paths are laid out on an east-west orientation that emphasizes length over width.

This is also a park that tells a story. Situated on land long occupied by the Massey-Harris (later Massey-Ferguson) Company, once the world's largest maker of farm equipment, the site was the manufacturing centre of Toronto and Canada. The loose arrangement of paths that resemble a row of ploughed "furrows" can be viewed as a subtle reference to the area's industrial heritage. The park speaks, too, of how a city changes and grows. How people now live and play in places where their forefathers worked and sweated. Like the most memorable parks, no matter where they are, Massey Harris is a place of enjoyment and reflection, a place that acknowledges the past while anticipating the future.

Site Diagram





R.A. MORROW MEMORIAL PARK MASTER PLAN

- Location: Peterborough, ON.

Site Plan



