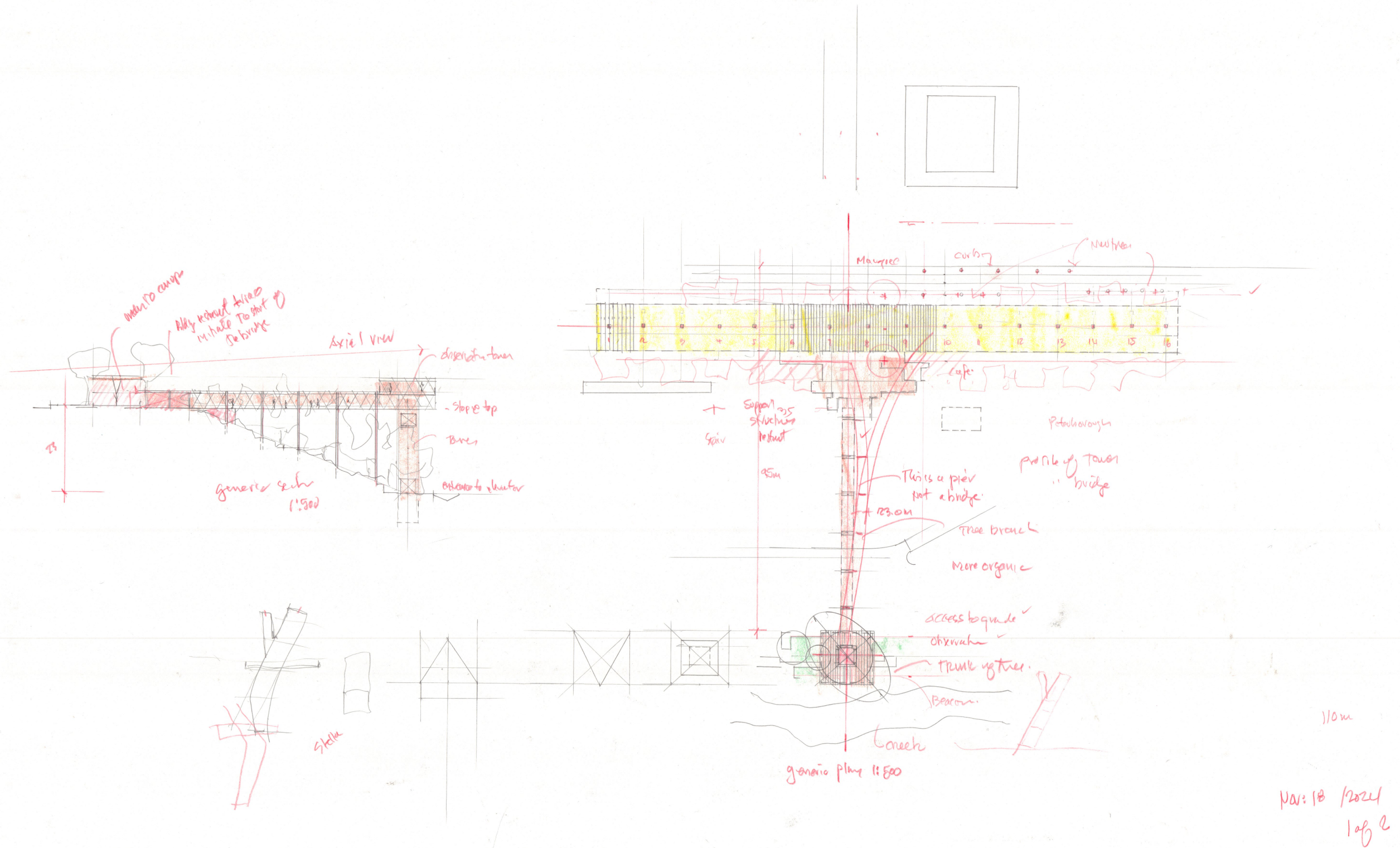


VALE OF AVOCA BRIDGE + ELEVATOR TOWER + SHADE CANOPY EXPLORATION

Brown + Storey Architects Inc.  
December 6, 2024

PRELIMINARY SKETCH A





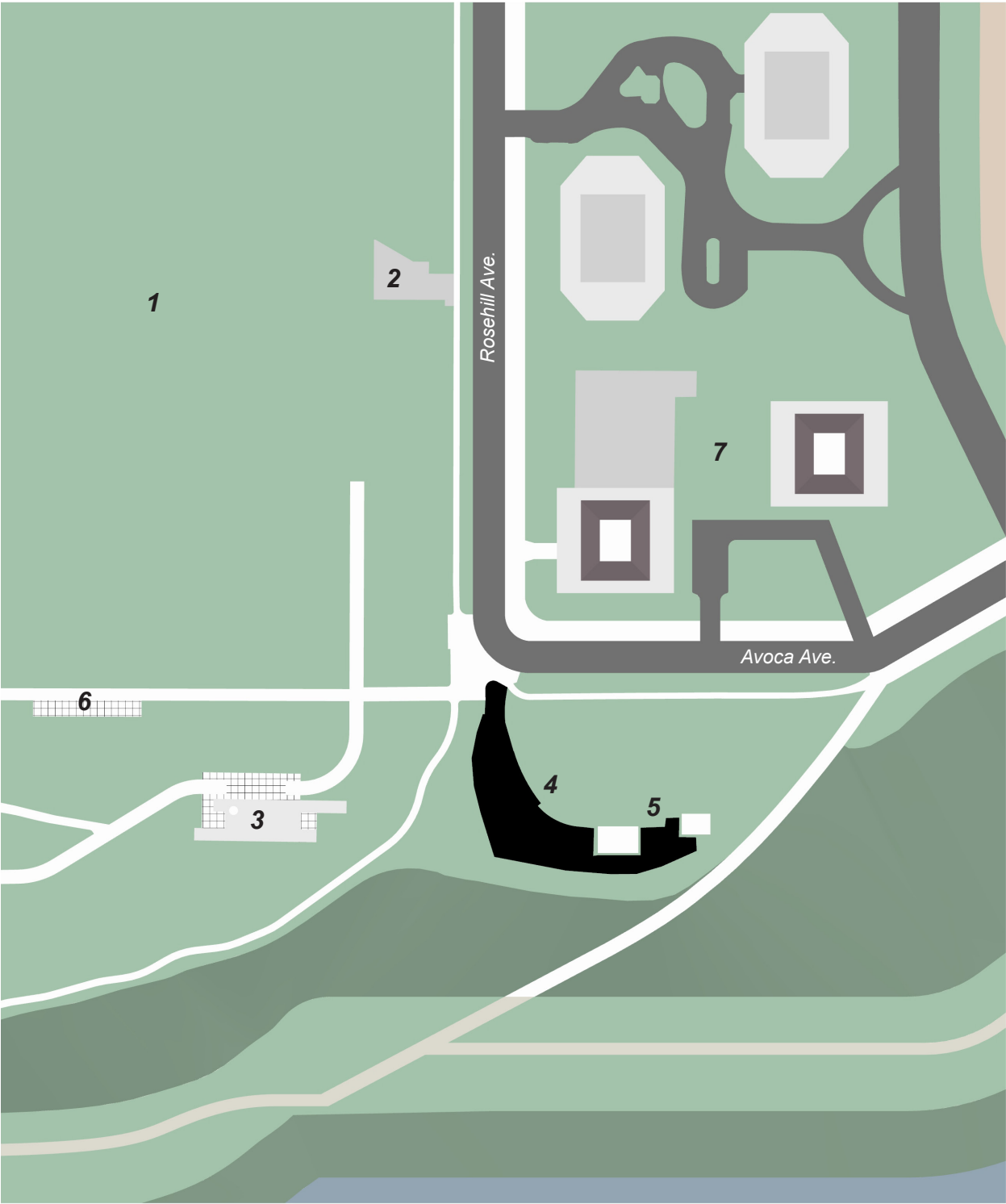
## PRELIMINARY SKETCH B

# EXISTING SITE



The separated strip of park along the frontage of the Vale of Avoca is a strategic site and situation that needs to be rethought. Currently it is a separated strip of land occupied partially by the parks department service structure and asphalt parking area. This site is distinguished potentially by its axial viewpoint from Rosehill Avenue and its connection to the North at St. Clair along Avoca Avenue and the St. Clair bridge. To the west the prominent apartment buildings form an urban face, of green lawns and parking lots behind them.

The Rosehill Washroom building and its open loggia provide both a frontage to Rosehill Reservoir and as well punctuates and links a range of intertwined pathways that connect to the large city lawn above the reservoir. The current separation of this section of the park needs to connect to the larger park with a 'structure of availabilities' for community and cultural potentials. The parks department structure can be included in a new form into a larger structure that offers more services and cultural amenities to the park, or relocated.



**KEY:**

- 1. David A. Balfour Reservoir Park/The Great Lawn
- 2. Centennial Monument
- 3. Rosehill Washrooms
- 4. Asphalt Paving
- 5. Park Service Buildings
- 6. Shade Canopy/Seating
- 7. Urban/Avoca Apartments

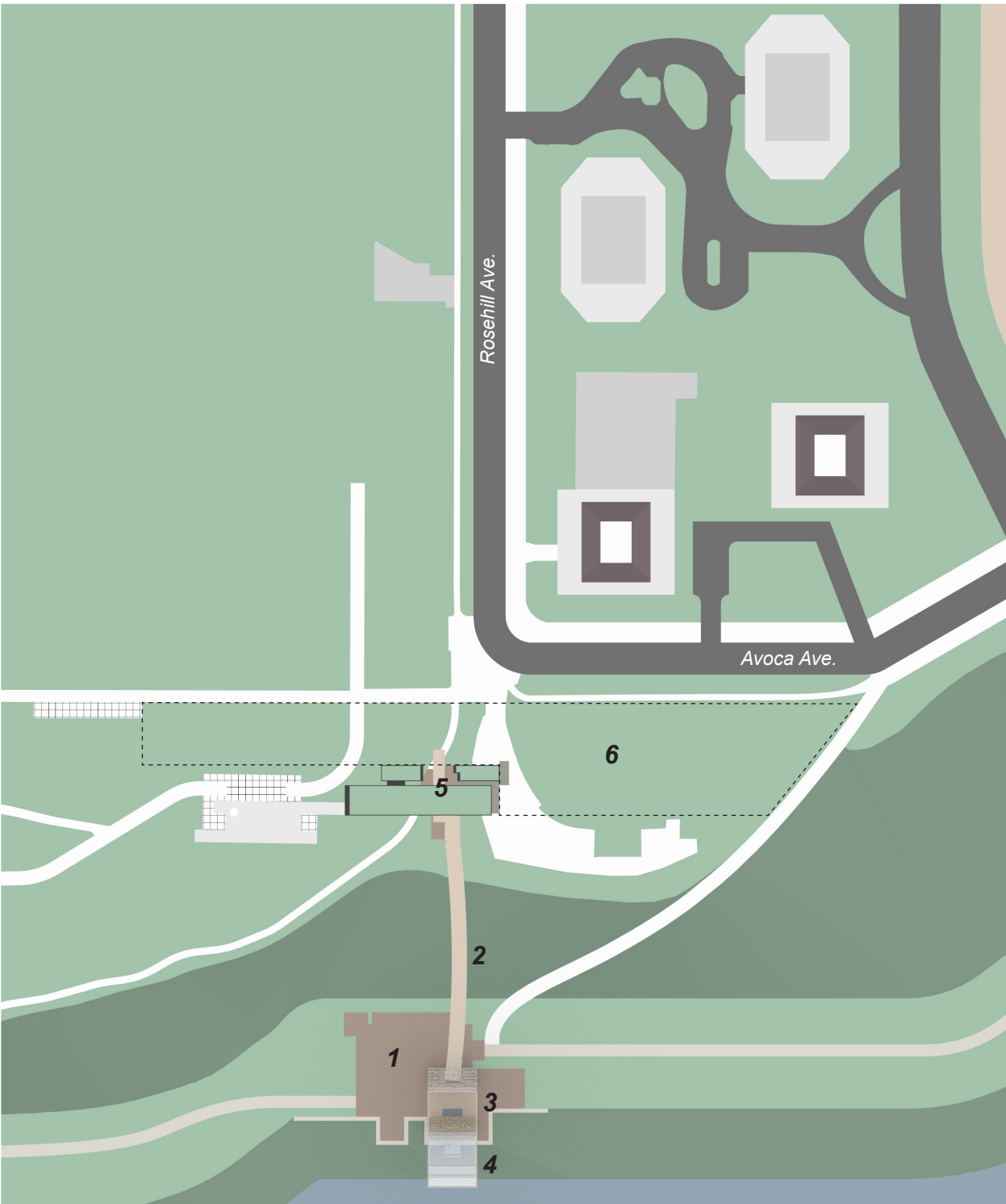


# WITH ELEVATOR TOWER + BRIDGE + AMENITY STRUCTURES



A proposed new bridge and tower located on the axis of Rosehill Avenue forms a strong connection between the city and the Vale of Avoca Ravine. The bridge and tower combination connect the upper park to a location below adjacent to the edge of Yellow Creek. The tower sits on a slightly raised base and public space that links to pathways along the creek's edge.

At the upper starting point for the bridge there are new public amenities for the park and surrounding communities in the form of a café/restaurant and other services. This situated amenity initiates and forms a transition space to the bridge and is linked to the existing washroom building and its open loggia. The bridge and tower combination are analogous structures that have tree like attributes, the 'curving branch-like' bridge connects to the tower 'trunk' that is set and inclined into the ravine. The tower provides a unique lookout and public space with an elevator surrounded by a screen patterned exterior that interacts with light and openness in a unique combination of the artificial and the natural.



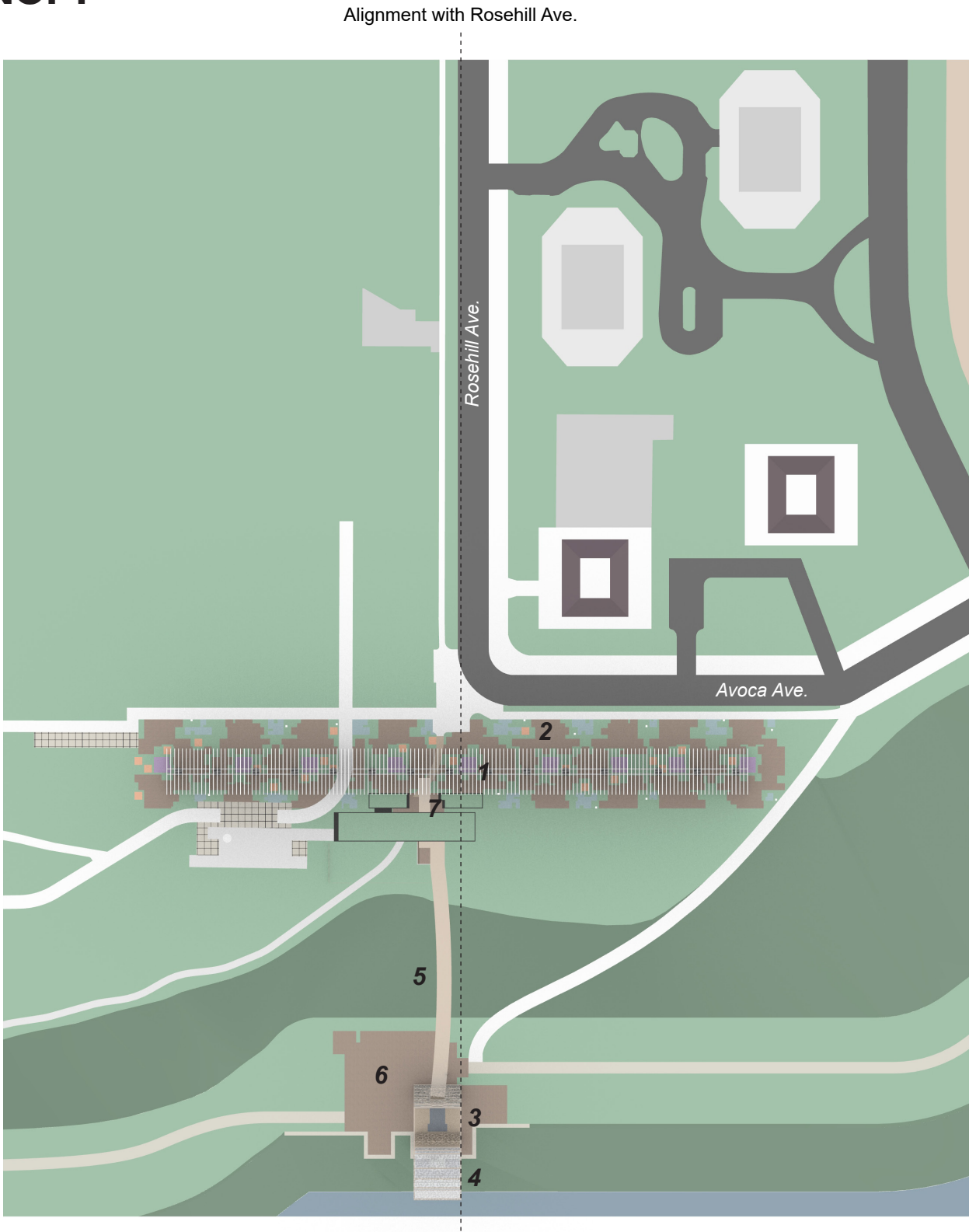
**KEY:**

- 1. Tower Base/Public Space
- 2. Bridge
- 3. Elevator Tower
- 4. Tower Lookout
- 5. Café/Restaurant Amenity Structures
- 6. Potential Space for Expansion

# WITH PATCHWORK + SHADE CANOPY



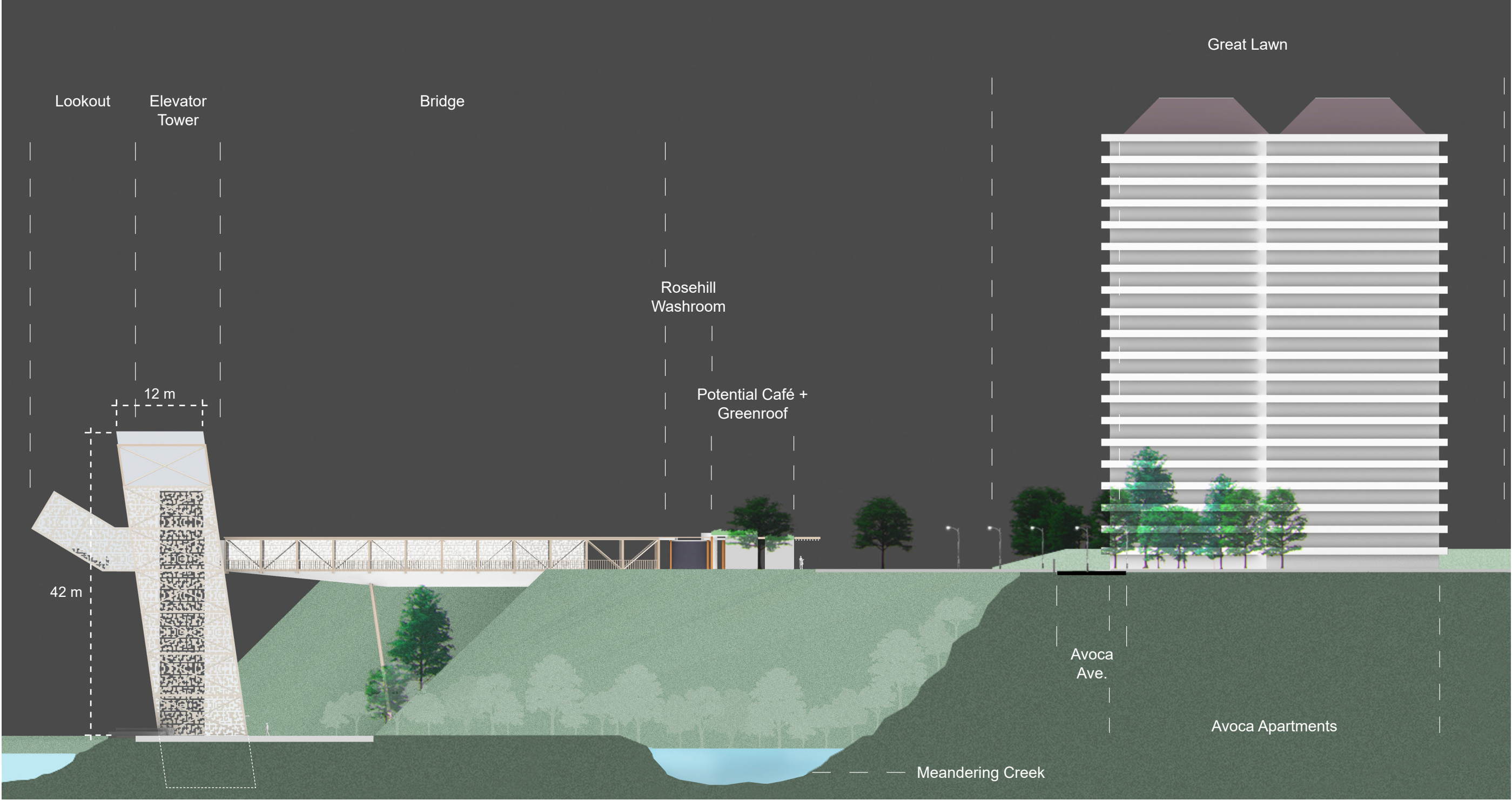
The shade canopy is an open structure of availabilities for innovation and appropriation by the larger park community and neighbourhood. The shade canopy is a climate modifier as well as a catalyst for a range of activities and landscapes. It is raised above a patchwork landscape mosaic in which a range of small gardens and landscape interact with each other creating a landscape to move through, to stop and as well enjoy. Most importantly the trellis canopy connects the Vale of Avoca and the isolated piece of the park into a more organized relationship to the existing washroom pavilion and to the café/restaurant aggregate. The canopy performs a number of different functions and forms a strong threshold to the new jointly combined existing structures. The patchwork landscape extends both inside and outside the perimeter of the canopy fronting on the Vale of Avoca side and the ravine edge to the east. The shade canopy is a propagation structure while not building its open exterior is meant to be interactive, as well as its fine grain elements and landscapes that fill the patchwork mosaic. The mosaic/archipelago borrows themes from water and echoes aspects of the ravine water/creek character.



- KEY:**
- 1. Shade Canopy
  - 2. Patchwork Landscape
  - 3. Elevator Tower
  - 4. Tower Lookout
  - 5. Bridge
  - 6. Tower Base/Public Space
  - 7. Café/Restaurant Amenity Structures



SITE SECTION - SOUTH



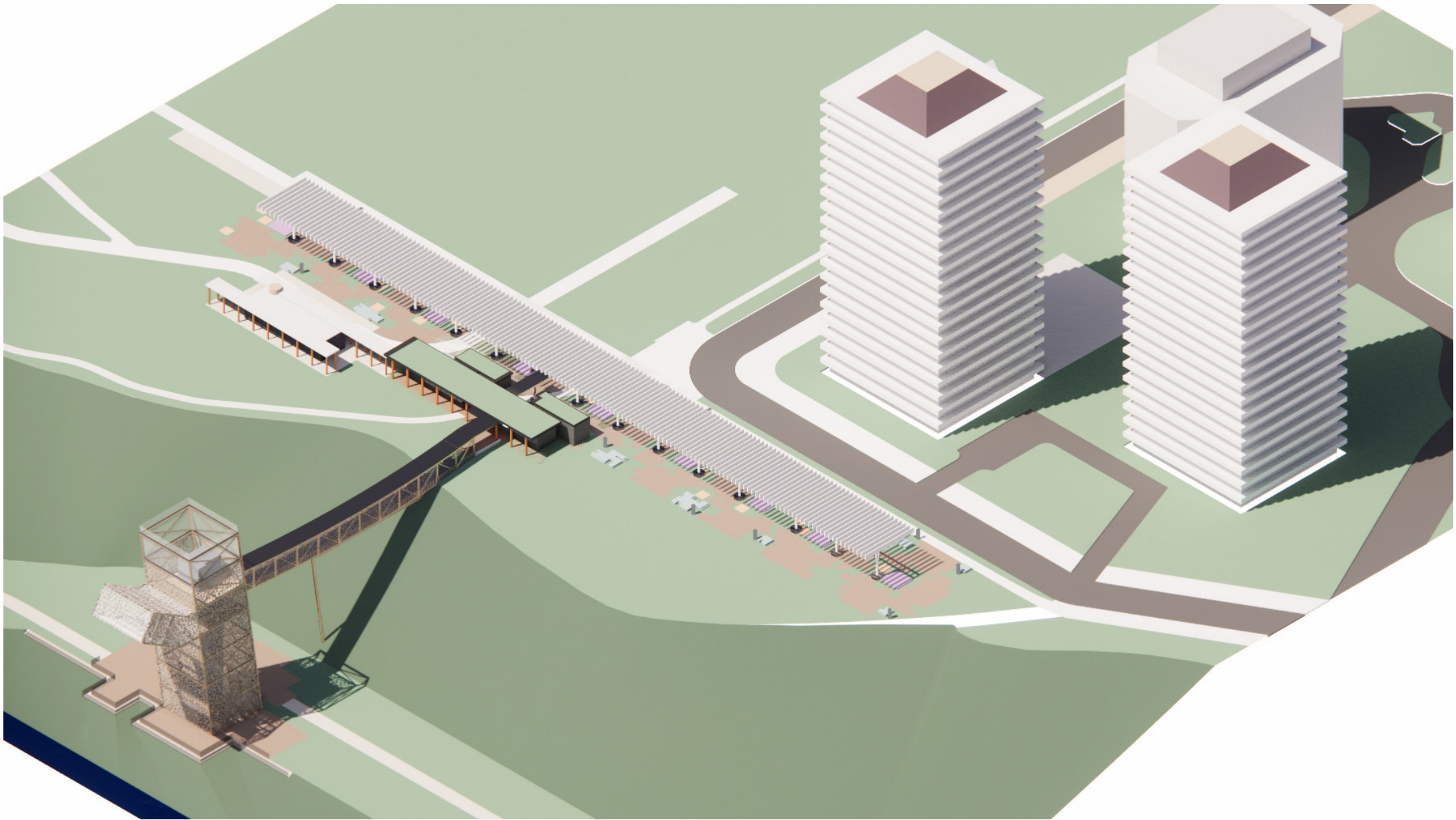


SITE SECTION - SOUTH WITH SHADE CANOPY

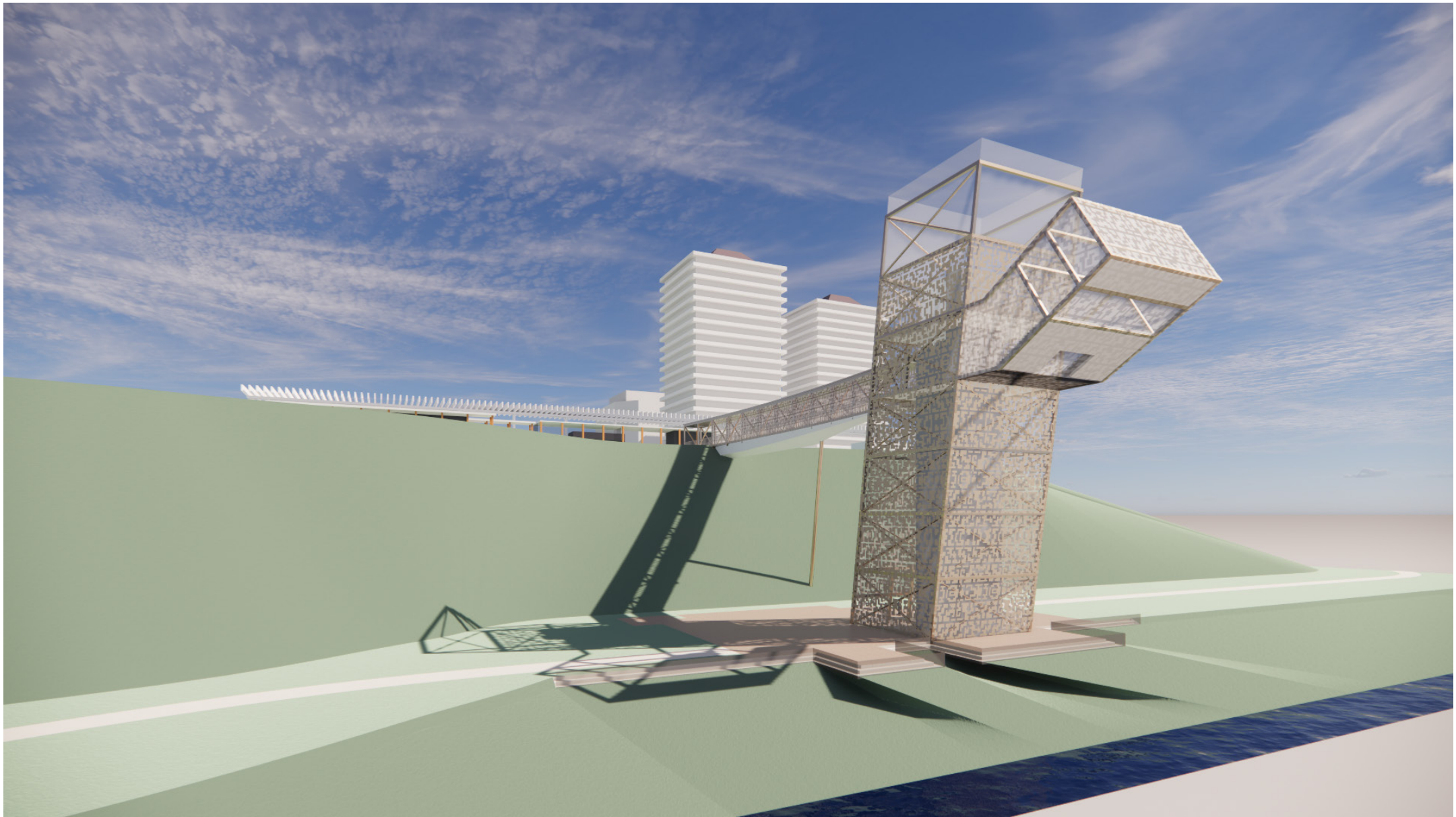




AERIAL - SOUTH-WEST

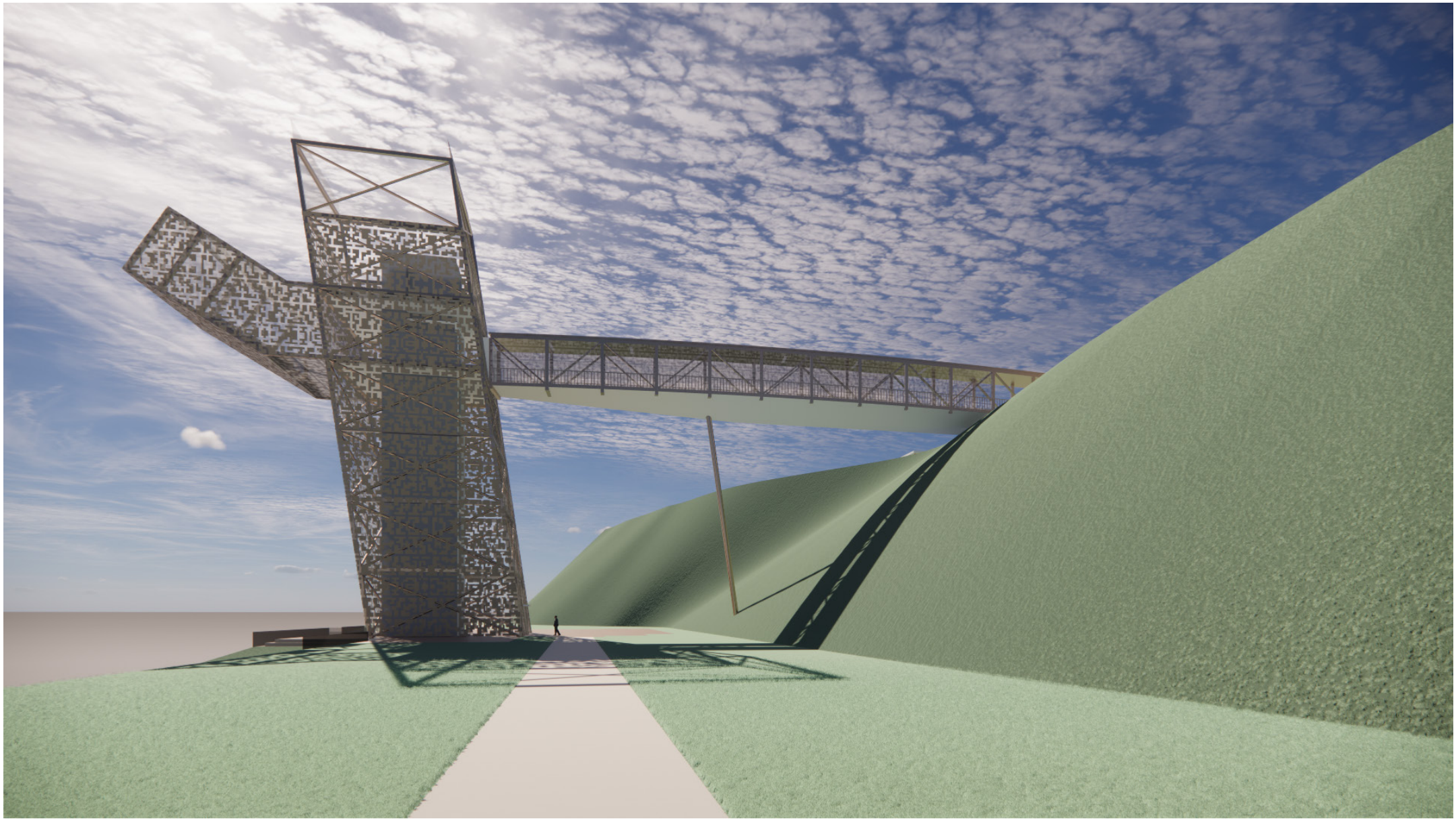


VIEW - NORTH-WEST





VIEW - SOUTH



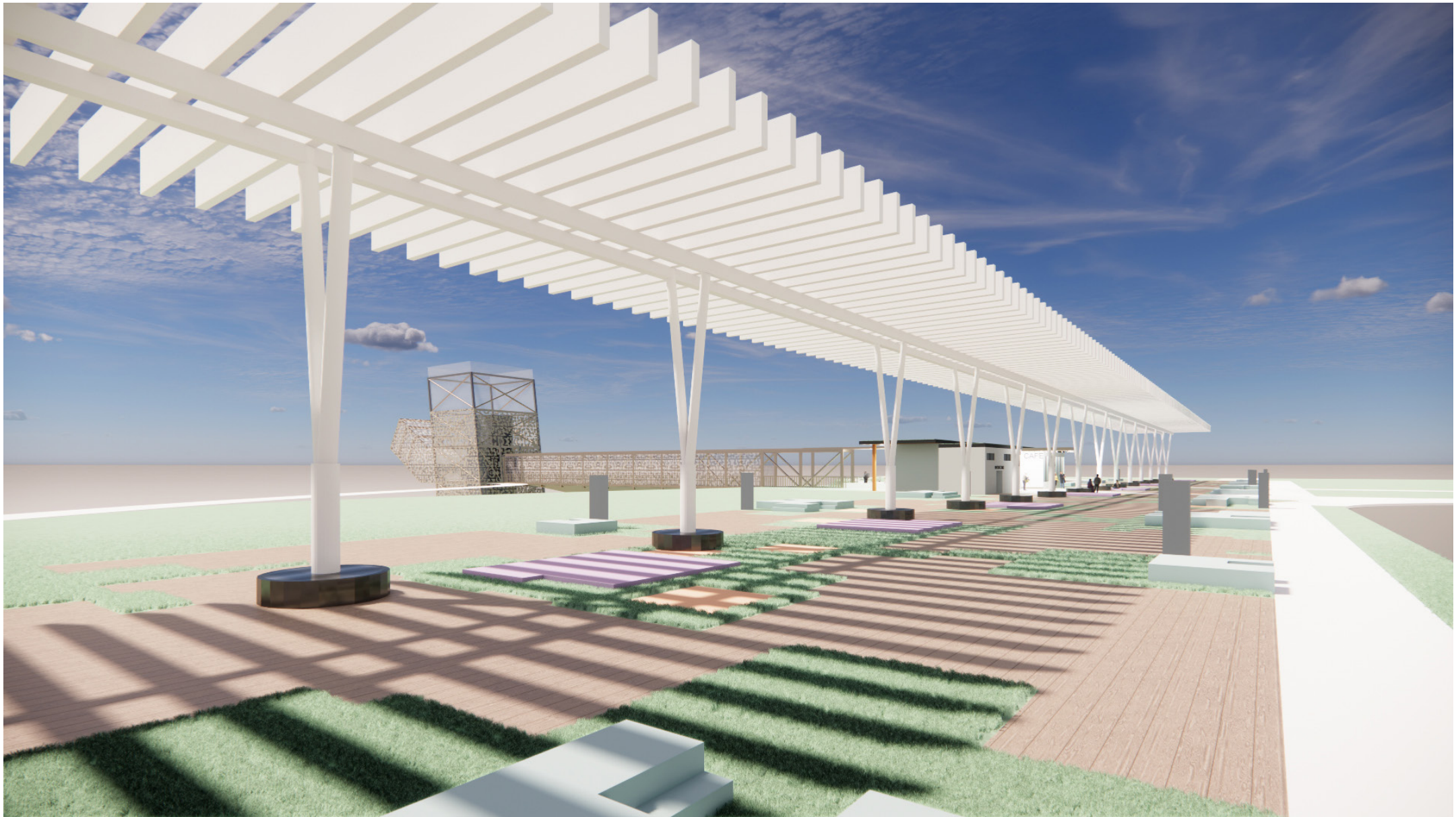


## VIEW - EAST



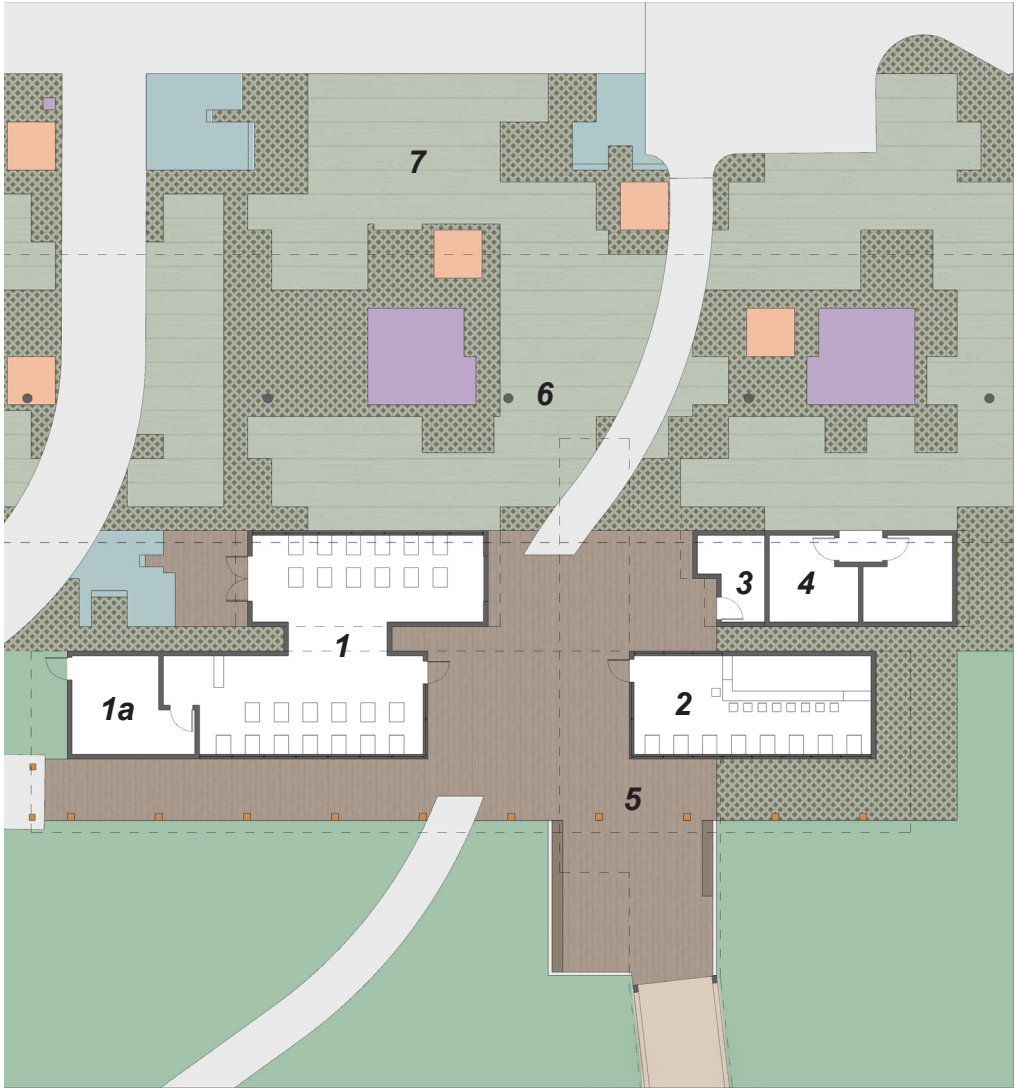


VIEW - SOUTH-EAST - PATCHWORK + CANOPY





PLAN + VIEWS - AMENITY STRUCTURES



KEY:

- 1. Café/Restaurant
- 1a. Kitchen
- 2. Bar
- 3. Office
- 4. Washrooms
- 5. Bridge Lobby
- 6. Beneath the Shade Canopy
- 7. Patchwork - Mosaic Landscapes

