

HOLODOMOR MEMORIAL DESIGN COMPETITION

QUESTIONS & ANSWERS

Q1. Can the design of the screens be three dimensional (within reason)?

A1. No, the design is to be a flat 2D image.

Q2. Is there already an existing flat piece of metal there which we are to add onto, or is the screen made from scratch?

A2. No, the winning design will be cut into new panels by the project fabricator

Q3. Do you have any concern regarding laser cutting the metal into a design (within the given parameters)? I'm wondering about the possibility of children cutting their fingers.

A3. No. The final product will look similar to the metal panels shown below.

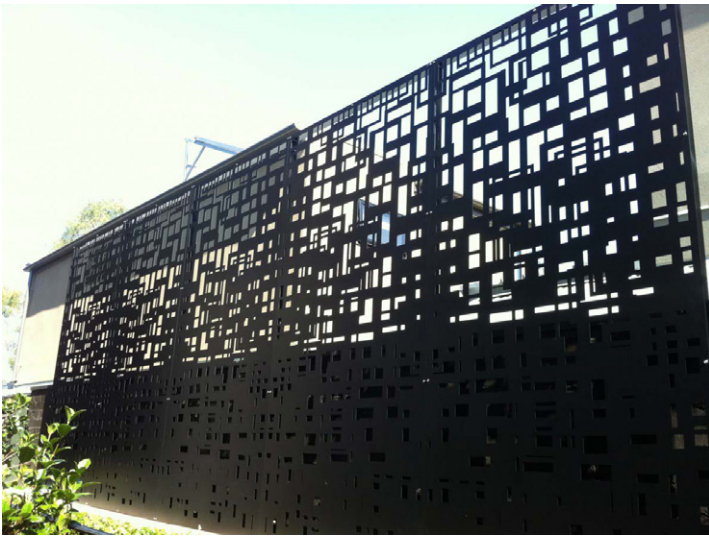


Image 1: <http://www.paneltime.com.au/wp-content/uploads/2016/06/31.jpg>

Image 2: <https://s-media-cache-ak0.pinimg.com/originals/19/bc/67/19bc67eb07312fd5023103ff04ed22a9.jpg>

Q4. What do you mean when discussing the lines? Do you mean lines cut into the metal? Please clarify.

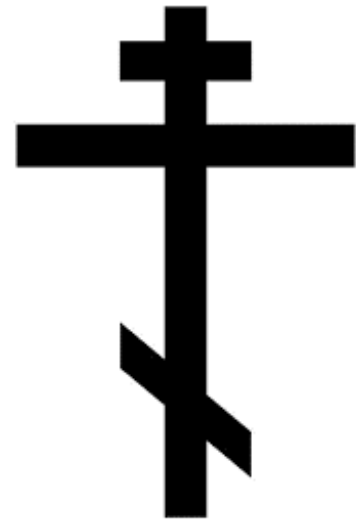
A4. The “lines” are the smallest amount of material that is left in between any open areas of a design.

Q5. Do you want the stainless steel to be the normal colour or can it be blackened?

A5. No, the stainless steel will remain normal colour.

Q6. I have spent hours trying to find definitive proof of which cross is Ukrainian Orthodox and which is Ukrainian Catholic. Can you please confirm?

A6. The Ukrainian Orthodox cross is a 3-barred cross similar to the Russian Orthodox cross. The difference between them lies in the proportions and the spacing and size of the horizontal bars. The first 2 images are examples of the Ukrainian Orthodox cross and the third is a Russian cross.



The Ukrainian Catholic cross is the same as the Ukrainian Orthodox cross only with the middle bar. Most that perished in the Holodomor were those of the Orthodox faith thus it is essential that the Orthodox cross be incorporated in the artwork.

Q7. Can I create the design so that there is a bit of work to be done on both sides? Or am I to create for one side only?

A7. The design is cut into a single sheet of material. One side is presented as the front, but it can be seen from both sides.

Q8. Regarding the 4 digit number, will this be placed on top of the design? Will this be included in the final design?

A8. The 4 digit number is to only be placed on the 18"x24" panels that participants are asked to submit. This number will not be included in the final design.

Q9. With regards to the design for the metal screens, will the designs be cut out? For example, will we be able to see through the other side of the screen/allows sunlight to pass through the screens?

A.9 The design will be cut out of the screen. The design must be able to be viewed from the front and back side of each screen.

Q10. In the call for submission it states " all the drawings must fit on a single 18 x 24 panel. Is this measurement to be in inches?

A10. This measurement is in inches.

Q11. Do I have to upload the design proposal online or do I have to submit an 18"x 24" board?

A11. We are asking participants to upload an 18"x 24" .pdf or .jpg file for each design proposal to the Dropbox folder you were provided.

Q12. Do you want the text on the 18"x 24" design as well?

A12. The text is to be included on the 18"x 24" panel but should not be included in the design of the ornamental metal screen. The text is there to describe the design intent of the metal screens to the jury.

Q13. Should the design be in a DXF format or will any vector drawing work?

A13. The final panel submission must be either .pdf or .jpg format.

Q14. Could you please advise me how to use the Dropbox link? I see the folder but can't upload any file. What are the requirements for the size?

A14. To upload files to the Dropbox folder, you will need to enter the folder, select the download icon on the top right of the screen, and select 'Save to my Dropbox'. This will allow you to upload your files to the shared folder. The uploaded files must be 18"x 24" .pdf or .jpg files. The files all together must be under 100MB in size.

Q15. In 8.0 Appendix, the "Elevations and Plan of screen with LED lighting" side elevation indicates that only the front of the screen is illuminated. Is this interpretation correct?

A15. Yes, that is correct.

Q16. The brief for this project indicates that artwork submissions for each screen should fit in a separate 18" x 24" panel. The technical diagram of a screen for this project indicates that there are two square panels per design - the artwork format for each panel being 1400mm x 1400m, with a margin of 290mm between panels. Will there be a (290mm, appx. 11.5") break in the center of the center of each final design? If so, should my submission reflect this gutter, or would the jury prefer an unbroken expanse of artwork to review?

A16. There will be a 145mm margin between panels. Your submission should reflect this gutter.

Q17. What are the dimensions of the three concrete posts holding the metal panels in mm?

A17. The metal posts holding the metal panels are 50 mm wide.

Q18. Can colour be used in the design or is only stenciling the metal allowed?

A18. Colour will not be used in the design.